

Scotland's Labour Market - Monthly Briefing – February 2022

Scottish Government: Office of the Chief Economic Adviser



Scottish Government
Riaghaltas na h-Alba
gov.scot

This document contains up-to-date statistical information concerning the labour market in Scotland from a range of official sources.

This document is part of a collection:

<https://www.gov.scot/collections/labour-market-statistics/>

HEADLINE ESTIMATES
gender
age

YOUNG PEOPLE (16-24)
gender
UK regions

LABOUR MARKET
disability
minority ethnic
underemployment
qualifications

UNEMPLOYMENT
duration
model-based

CLAIMANT COUNT
all ages
young people (16-24)
local authorities

HMRC PAYE DATA
payrolled employees
median annual pay
mean annual pay
aggregate pay

*new
data*

1. HEADLINE MEASURES	
<i>Headline data</i>	<ul style="list-style-type: none"> y Table 1.1: Estimates of employment and unemployment by UK country, Oct-Dec 2021 y Charts 1.1 and 1.2: Employment and unemployment rate trends for Scotland and UK, Oct-Dec 2021 y Charts 1.3 and 1.4: Employment rate (16-64) by UK country, Oct-Dec 2021 - change on quarter and year y Charts 1.5 and 1.6: Unemployment rate (16+) by UK country, Oct-Dec 2021 - change on quarter and year y Table 1.2: Estimates of economic activity and inactivity by UK country, Oct-Dec 2021 y Tables 1.3 and 1.4: Unemployment and Employment by Government Office Region, Oct-Dec 2021 y Charts 1.7 and 1.8: Employment rate (16-64) for Government Office Regions, Oct-Dec 2021 - change on quarter and year y Charts 1.9 and 1.10: Unemployment rate (16+) for Government Office Regions, Oct-Dec 2021 - change on quarter and year
<i>gender</i>	<ul style="list-style-type: none"> y Table 1.5: Employment, ILO unemployment and inactivity rates by gender, Oct-Dec 2021 y Chart 1.11: Employment rate by gender (16-64), Scotland and UK, 1997-2021 y Chart 1.12: Unemployment rate by gender (16+), Scotland and UK, 1997-2021 y Chart 1.13: Inactivity rate by gender (16-64), Scotland, UK 1997-2021
<i>age</i>	<ul style="list-style-type: none"> y Table 1.6 : Employment, ILO Unemployment and Inactivity by age group, Scotland and UK (APS and LFS)
2: YOUNG PEOPLE (16-24 YEARS)	
<i>Headline data</i>	<ul style="list-style-type: none"> y Table 2.1: Employment, Unemployment and Inactivity (LFS and APS) for the 16-24 age group, Scotland and UK Charts 2.1 and 2.2: Employment and unemployment for the 16-24 age group, Scotland and UK (APS)
<i>gender</i>	<ul style="list-style-type: none"> Table 2.2: Employment, ILO unemployment and inactivity for the 16-24 age group by gender, Scotland and UK (APS), Oct 2020 - Sep 2021 Charts 2.3 and 2.4: Employment and unemployment for the 16-24 age group by gender, Scotland (APS)
<i>UK</i>	<ul style="list-style-type: none"> y Tables 2.3 and 2.4: Unemployment and Employment for the 16-24 age group by Government Office Region, Oct-Dec 2021
3: LABOUR MARKET	
<i>disability</i>	<ul style="list-style-type: none"> y Table 3.1: Employment rates and levels of the population aged 16-64 by disability status, Scotland (LFS and APS), 2014-2021
<i>ethnicity</i>	<ul style="list-style-type: none"> Table 3.2: Employment rates and levels of the population aged 16-64 by ethnicity and gender, Scotland, 2011 - 2021
<i>self-employed, full-time part-time</i>	<ul style="list-style-type: none"> y Table 3.3: Employment patterns, Scotland, Oct-Dec 2021
<i>underemployment</i>	<ul style="list-style-type: none"> Table 3.4: Underemployment, Scotland and UK, 2012-2021
<i>qualifications</i>	<ul style="list-style-type: none"> Table 3.5: Employment rates by highest qualification held and gender, Scotland and UK, Oct 2020 - Sep 2021

Scotland's Labour Market - Monthly Briefing – February 2022

Scottish Government: Office of the Chief Economic Adviser



Scottish Government
Riaghaltas na h-Alba
gov.scot

This document contains up-to-date statistical information concerning the labour market in Scotland from a range of official sources.

This document is part of a collection:

<https://www.gov.scot/collections/labour-market-statistics/>

HEADLINE ESTIMATES
gender
age

YOUNG PEOPLE (16-24)
gender
UK regions

LABOUR MARKET
disability
minority ethnic
underemployment
qualifications

UNEMPLOYMENT
duration
model-based

CLAIMANT COUNT
all ages
young people (16-24)
local authorities

HMRC PAYE DATA
payrolled employees
median annual pay
mean annual pay
aggregate pay

*new
data*

<p>4: UNEMPLOYMENT <i>by duration model-based by age</i></p>	<p>Table 4.1: Unemployment by duration, Annual Population Survey, Oct 2020 - Sep 2021 Table 4.2: Model Based Unemployment levels and rates by Local Authority Chart 4.1: ILO unemployment levels by age-group (16-64), Scotland</p>
<p>5: CLAIMANT COUNT <i>16+ years 16-24 years</i></p>	<p>EXPERIMENTAL STATISTICS y Chart 5.1: Unemployment, Alternative Claimant Count and Claimant Count levels, Scotland, January 2013 - January 2022 y Table 5.1: Claimant Count data for January 2022 - (Experimental Data) y Table 5.2: Claimant Count by local authority (Experimental data) y Chart 5.2: Change in Claimant Count rate by local authority, January 2021 to January 2022 (Experimental data) y Tables 5.3 and 5.4: 16-24 Claimant Count levels and rates, Scotland and UK (Experimental data) y Table 5.5: 16-24 Claimant Count levels and rates by Local Authority, January 2022 (Experimental data)</p>
<p>6: HMRC REAL TIME PAYE DATA <i>Scotland and UK by region by age by industry</i></p>	<p>EXPERIMENTAL STATISTICS y Table 6.1: HMRC RTI data, Scotland and UK, December 2015 - December 2021 (Experimental data) y Chart 6.1: Median monthly pay, Scotland and UK, December 2015 - January 2022 (Experimental data) y Charts 6.2 and 6.3: Payrolled employees and median monthly pay by region - annual change, January 2021 to January 2022 (Experimental data) y Charts 6.4 and 6.5: Payrolled employees and median monthly pay (NUTS2) - annual change, January 2021 to January 2022 (Experimental data) y Table 6.2: HMRC RTI data (NUTS2 and NUTS3 areas), January 2022 (Experimental data) y Charts 6.6 and 6.7: Payrolled employees and median monthly pay by age - annual change, December 2020 to December 2021 (Experimental data) y Chart 6.8: Payrolled employees by industry - annual change, January 2021 to January 2022 (Experimental data) y Chart 6.9: Median monthly pay by industry - annual change, January 2021 to January 2022 (Experimental data)</p>
<p>BACKGROUND INFORMATION <i>Notes - 1 Notes - 2</i></p>	<p>Further information on revisions in response to COVID-19 measures, Claimant Count and Measures of Disability Further sources and contact details</p>

Table 1.1: Estimates of employment and unemployment by UK country, Oct-Dec 2021
seasonally adjusted

	Level ('000)							Rate						
	Level	change on Jul-Sep 2021		change on Oct-Dec 2020		change on Oct-Dec 2011		Rate (%)	change on Jul-Sep 2021 (%pt)		change on Oct-Dec 2020 (%pt)		change on Oct-Dec 2011 (%pt)	
Employment* (levels 16+, rates 16-64)														
Scotland	2,646	-16	↓	29	↑	159	↑	74.1	-0.6	↓	0.8	↑	3.3	↑
England	27,510	-18	↓	279	↑	2,826	↑	75.9	0.1	↑	0.8	↑	5.5	↑
Wales	1,475	-8	↓	22	↑	107	↑	74.5	0.7	↑	2.2	↑	5.9	↑
Northern Ireland	855	4	↑	8	↑	51	↑	70.7	0.5	↑	0.5	↑	3.1	↑
UK	32,485	-38	↓	337	↑	3,143	↑	75.5	0.1	↑	0.9	↑	5.3	↑
Unemployment** (16+)														
Scotland	112	-2	↓	-12	↓	-121	↓	4.1	0.0	↔	-0.5	↓	-4.5	↓
England	1,192	-49	↓	-356	↓	-1,070	↓	4.2	-0.2	↓	-1.2	↓	-4.2	↓
Wales	47	-11	↓	-22	↓	-87	↓	3.1	-0.7	↓	-1.4	↓	-5.8	↓
Northern Ireland	24	-12	↓	-7	↓	-37	↓	2.7	-1.3	↓	-0.8	↓	-4.3	↓
UK	1,374	-74	↓	-396	↓	-1,314	↓	4.1	-0.2	↓	-1.2	↓	-4.3	↓

Source: Labour Force Survey, ONS

Note: *Denominator = all persons aged 16-64 **Denominator = total economically active (16+)

IMPORTANT NOTE: Labour Force Survey (LFS) estimates from Jan-Mar 2020 to Feb-Apr 2021 were reweighted in July 2021 to new populations derived using growth rates from HM Revenue and Customs (HMRC) Real Time Information (RTI) to allow for different trends during the COVID-19 pandemic. Annual comparisons within this table are therefore based on estimates which may differ from those previously published. For further information, see Notes (page 43).

Charts 1.1 and 1.2: Employment and unemployment rate trends for Scotland and UK, Oct-Dec 2021

seasonally adjusted

Chart 1.1: Employment rate (16-64), Scotland and UK
seasonally adjusted

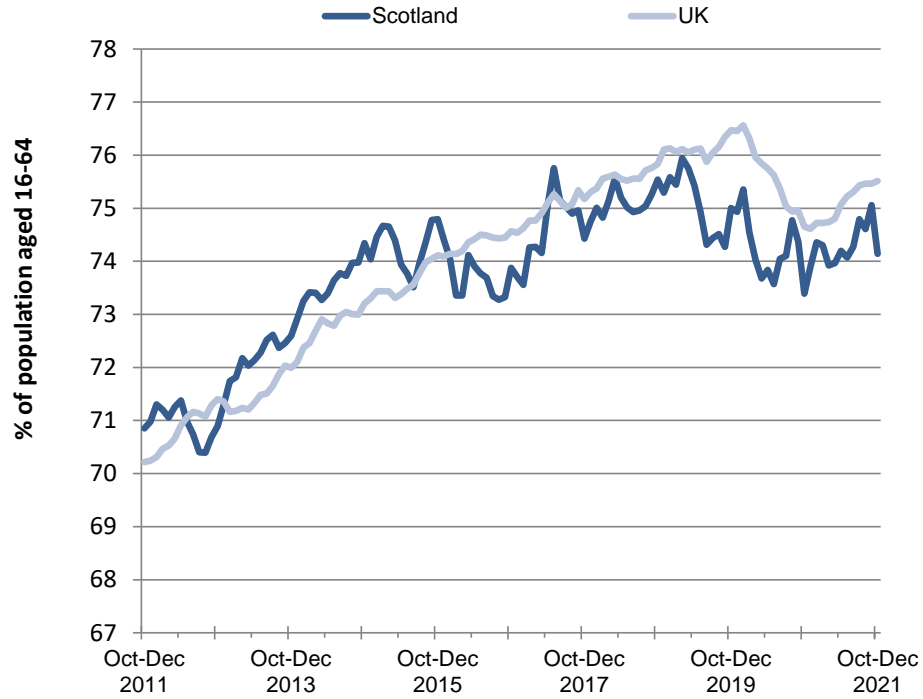
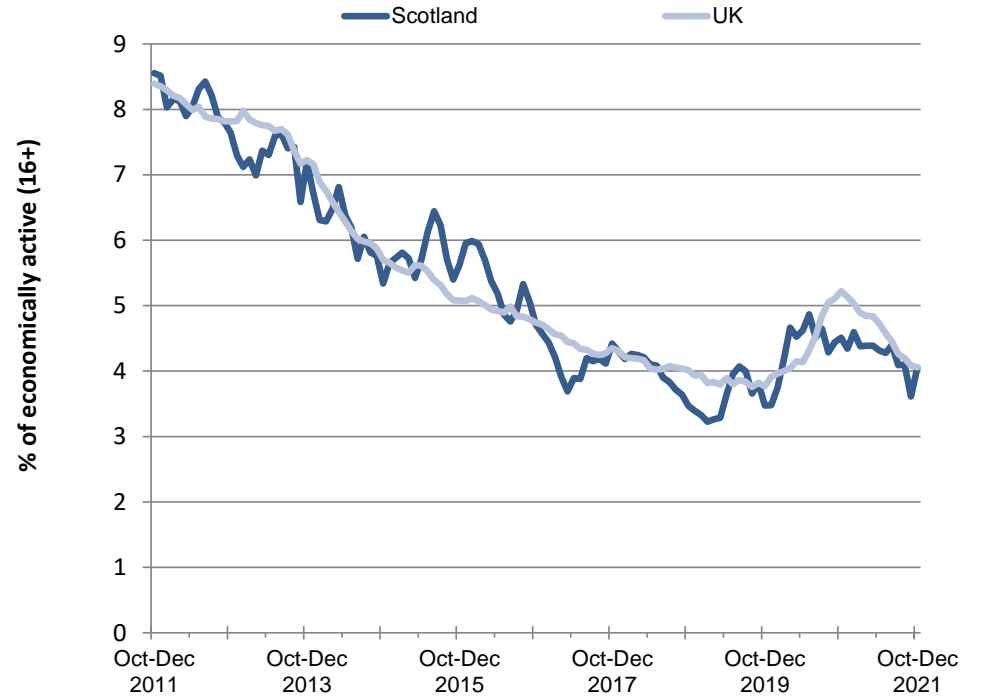


Chart 1.2: Unemployment rate (16+), Scotland and UK
seasonally adjusted



Source: Labour Force Survey, ONS

Charts 1.3 and 1.4: Employment rate (16-64) by UK country, Oct-Dec 2021 - change on quarter and year
seasonally adjusted

Chart 1.3: Employment rate (16-64) by UK country - change on quarter
seasonally adjusted

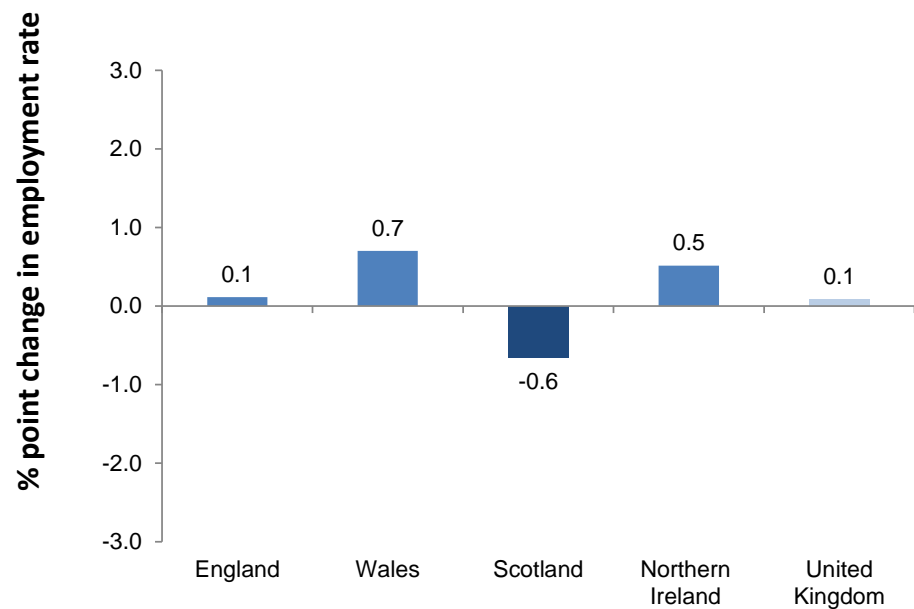
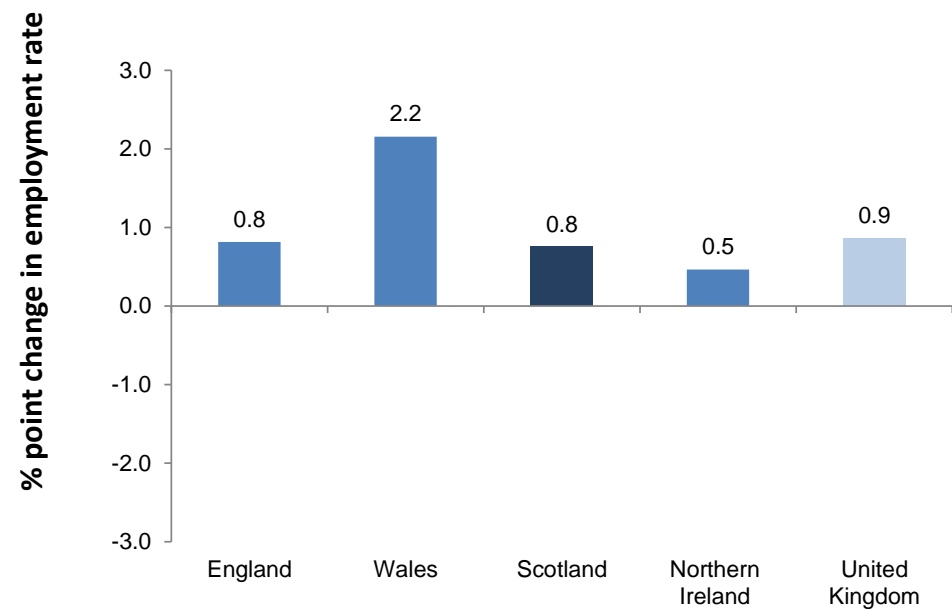


Chart 1.4: Employment rate (16-64) by UK country - change on year
seasonally adjusted



Source: Labour Force Survey, ONS

Note: Chart bars based on unrounded data. Chart labels rounded to one decimal place.

Charts 1.5 and 1.6: Unemployment rate (16+) by UK country, Oct-Dec 2021 - change on quarter and year

seasonally adjusted

Chart 1.5: Unemployment rate (16+) by UK country - change on quarter
seasonally adjusted

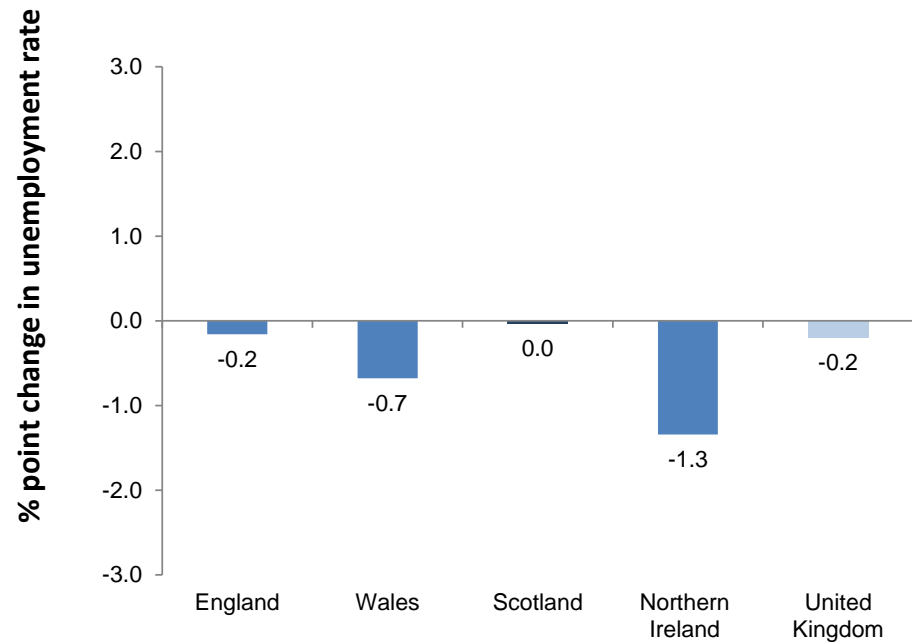
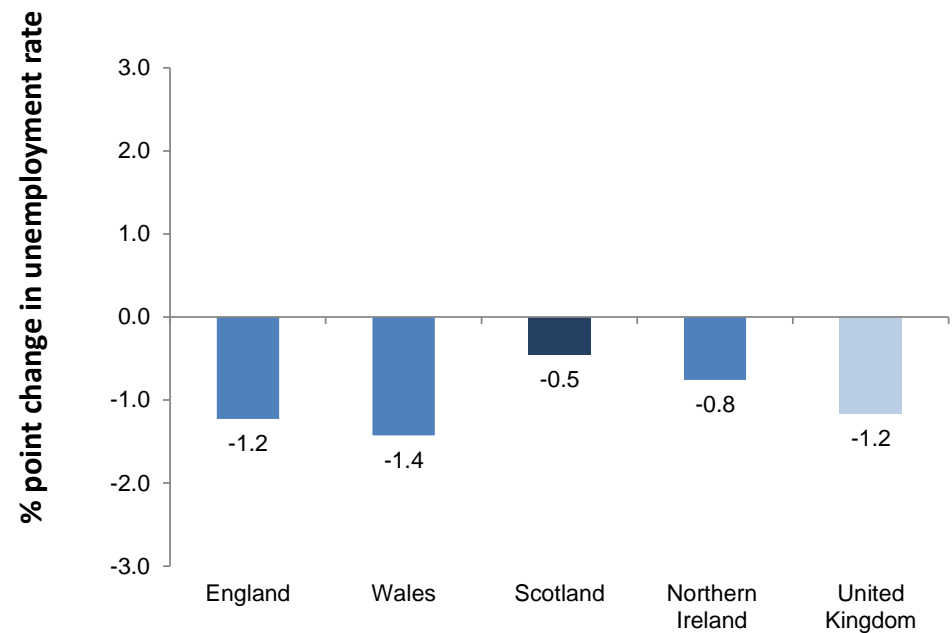


Chart 1.6: Unemployment rate (16+) by UK country - change on year
seasonally adjusted



Source: Labour Force Survey, ONS

Note: Chart bars based on unrounded data. Chart labels rounded to one decimal place.

Table 1.2: Estimates of economic activity and inactivity by UK country, Oct-Dec 2021

seasonally adjusted

	Level ('000)							Rate						
	Level	change on Jul-Sep 2021		change on Oct-Dec 2020		change on Oct-Dec 2011		Rate (%)	change on Jul-Sep 2021 (%pt)		change on Oct-Dec 2020 (%pt)		change on Oct-Dec 2011 (%pt)	
Economic Activity* (levels 16+, rates 16-64)														
Scotland	2,758	-17	↓	17	↑	38	↑	77.4	-0.6	↓	0.5	↑	-0.2	↓
England	28,702	-67	↓	-77	↓	1,757	↑	79.2	0.0	↔	-0.2	↓	2.3	↑
Wales	1,522	-19	↓	0	↔	20	↑	76.9	0.1	↑	1.1	↑	1.5	↑
Northern Ireland	878	-8	↓	1	↑	14	↑	72.7	-0.5	↓	-0.1	↓	-0.1	↓
UK	33,860	-112	↓	-59	↓	1,829	↑	78.8	-0.1	↓	-0.1	↓	2.0	↑
Economic Inactivity* (16-64)														
Scotland	773	21	↑	-18	↓	6	↑	22.6	0.6	↑	-0.5	↓	0.2	↑
England	7,235	6	↑	75	↑	-620	↓	20.8	0.0	↔	0.2	↑	-2.3	↓
Wales	438	-2	↓	-21	↓	-34	↓	23.1	-0.1	↓	-1.1	↓	-1.5	↓
Northern Ireland	317	6	↑	1	↑	2	↑	27.3	0.5	↑	0.1	↑	0.1	↑
UK	8,764	31	↑	36	↑	-645	↓	21.2	0.1	↑	0.1	↑	-2.0	↓

Source: Labour Force Survey, ONS

Note: *Denominator = all aged 16-64

IMPORTANT NOTE: Labour Force Survey (LFS) estimates from Jan-Mar 2020 to Feb-Apr 2021 were reweighted in July 2021 to new populations derived using growth rates from HM Revenue and Customs (HMRC) Real Time Information (RTI) to allow for different trends during the COVID-19 pandemic. Annual comparisons within this table are therefore based on estimates which may differ from those previously published. For further information, see Notes (page 43).

Table 1.3: Unemployment by Government Office Region (LFS), Oct-Dec 2021
seasonally adjusted

	Level	Level ('000)				Rate (%)	Rate			
		Level	change on Jul-Sep 2021	change on Oct-Dec 2020	Rate (%)		change on Jul-Sep 2021 (%pt)	change on Oct-Dec 2020 (%pt)		
North East	70	6	↑	-11	↓	5.6	0.4	↑	-0.7	↓
North West	166	17	↑	-9	↓	4.7	0.5	↑	-0.2	↓
Yorkshire and The Humber	101	-20	↓	-42	↓	3.8	-0.7	↓	-1.5	↓
East Midlands	82	-16	↓	-73	↓	3.4	-0.7	↓	-2.9	↓
West Midlands	147	6	↑	-40	↓	4.9	0.1	↑	-1.4	↓
East	98	-11	↓	-43	↓	3.0	-0.3	↓	-1.4	↓
London	262	-22	↓	-106	↓	5.2	-0.5	↓	-2.1	↓
South East	185	6	↑	11	↑	3.9	0.2	↑	0.3	↑
South West	82	-14	↓	-44	↓	2.9	-0.4	↓	-1.6	↓
Wales	47	-11	↓	-22	↓	3.1	-0.7	↓	-1.4	↓
Northern Ireland	24	-12	↓	-7	↓	2.7	-1.3	↓	-0.8	↓
Scotland	112	-2	↓	-12	↓	4.1	0.0	↔	-0.5	↓
United Kingdom	1,374	-74	↓	-396	↓	4.1	-0.2	↓	-1.2	↓
England	1,192	-49	↓	-356	↓	4.2	-0.2	↓	-1.2	↓

Source: Labour Force Survey, ONS

Table 1.4: Employment by UK Countries and Regions (LFS), Oct-Dec 2021
seasonally adjusted

	Level	Level ('000)				Rate (%)	Rate			
		Level	change on Jul-Sep 2021	change on Oct-Dec 2020	Rate (%)		change on Jul-Sep 2021 (%pt)	change on Oct-Dec 2020 (%pt)		
North East	1,186	2	↑	-14	↓	71.0	0.3	↑	-0.4	↓
North West	3,406	-24	↓	4	↑	73.7	-0.3	↓	0.4	↑
Yorkshire and The Humber	2,543	1	↑	-1	↓	72.8	0.4	↑	-0.3	↓
East Midlands	2,312	3	↑	34	↑	75.4	-0.1	↓	0.9	↑
West Midlands	2,821	31	↑	71	↑	75.0	0.8	↑	1.8	↑
East	3,124	-8	↓	70	↑	79.1	0.1	↑	2.1	↑
London	4,810	33	↑	85	↑	75.9	0.8	↑	1.5	↑
South East	4,535	-40	↓	-37	↓	77.6	-0.8	↓	-0.8	↓
South West	2,773	-16	↓	65	↑	78.8	0.0	↔	1.9	↑
Wales	1,475	-8	↓	22	↑	74.5	0.7	↑	2.2	↑
Northern Ireland	855	4	↑	8	↑	70.7	0.5	↑	0.5	↑
Scotland	2,646	-16	↓	29	↑	74.1	-0.6	↓	0.8	↑
United Kingdom	32,485	-38	↓	337	↑	75.5	0.1	↑	0.9	↑
England	27,510	-18	↓	279	↑	75.9	0.1	↑	0.8	↑

Source: Labour Force Survey, ONS

IMPORTANT NOTE: Labour Force Survey (LFS) estimates from Jan-Mar 2020 to Feb-Apr 2021 were reweighted in July 2021 to new populations derived using growth rates from HM Revenue and Customs (HMRC) Real Time Information (RTI) to allow for different trends during the COVID-19 pandemic. Annual comparisons within this table are therefore based on estimates which may differ from those previously published. For further information, see Notes (page 43).

Charts 1.7 and 1.8: Employment rate (16-64) for Government Office Regions, Oct-Dec 2021 - change on quarter and year
seasonally adjusted

Chart 1.7: Employment rate (16-64) by Government Office Region - change on quarter
seasonally adjusted

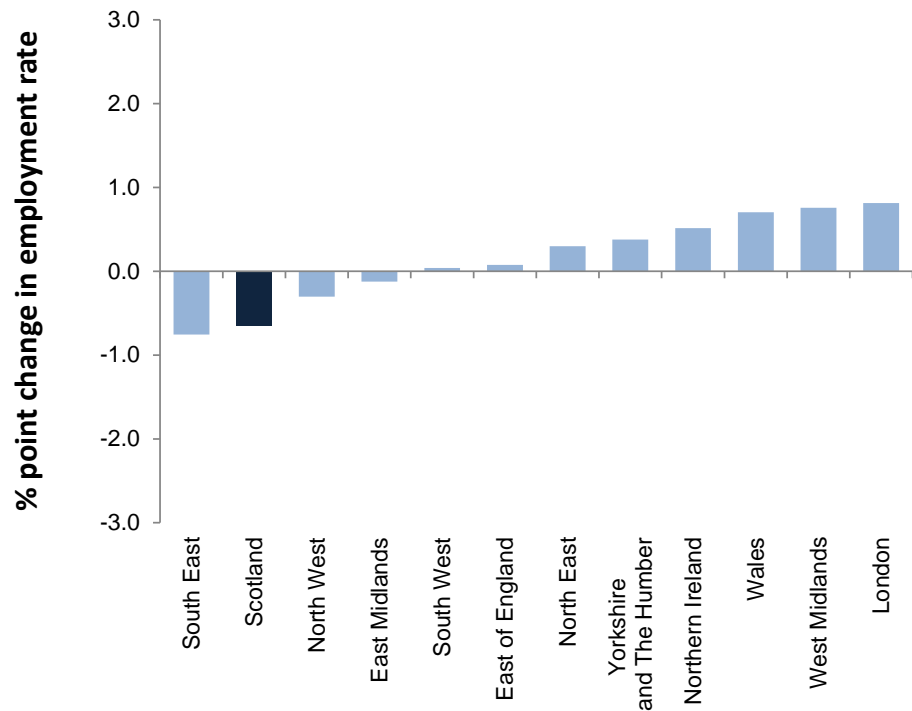
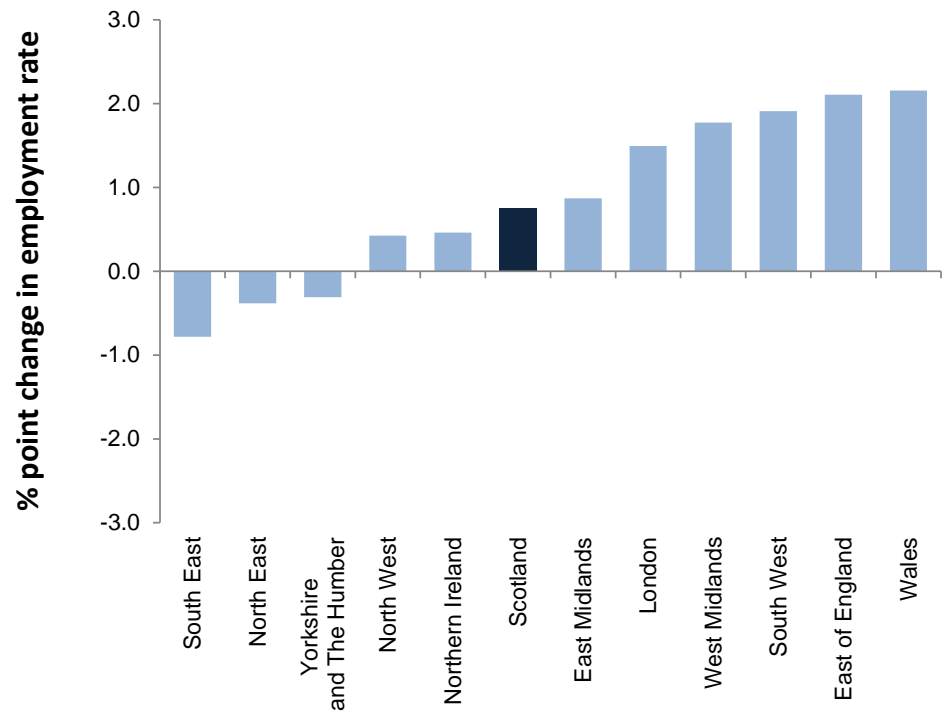


Chart 1.8: Employment rate (16-64) by Government Office Region - change on year
seasonally adjusted



Source: Labour Force Survey, ONS

Charts 1.9 and 1.10: Unemployment rate (16+) for Government Office Regions, Oct-Dec 2021 - change on quarter and year
seasonally adjusted

Chart 1.9: Unemployment rate (16+) by Government Office Region - change on quarter
seasonally adjusted

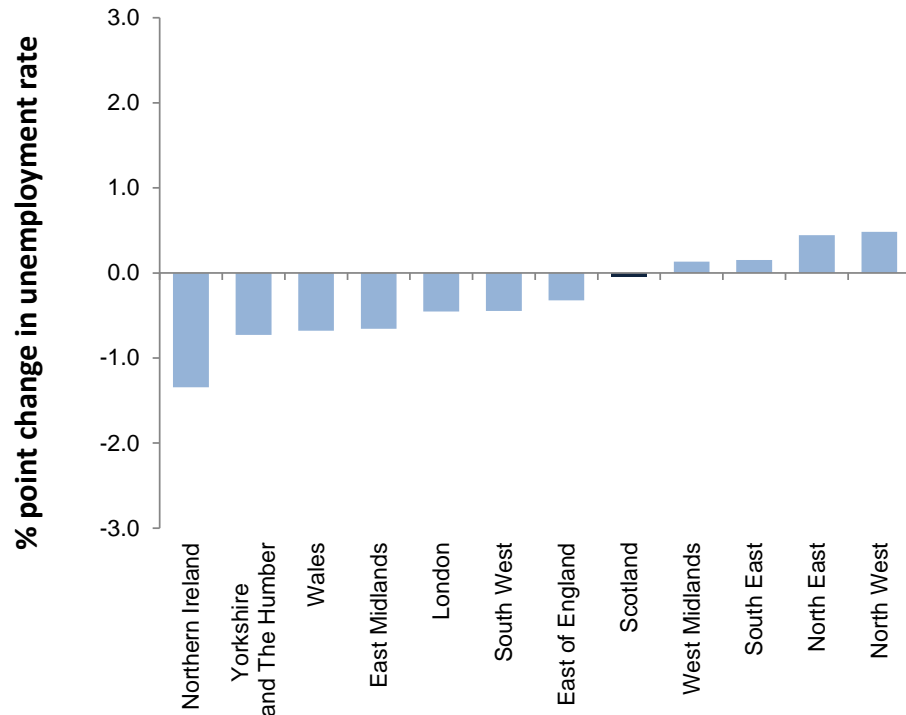
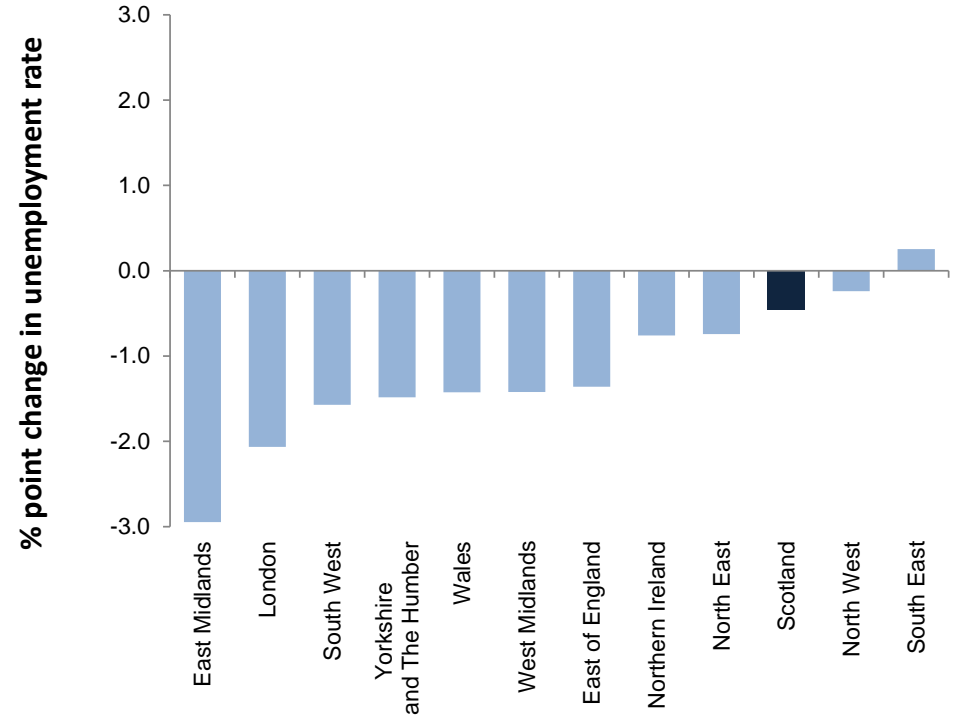


Chart 1.10: Unemployment rate (16+) by Government Office Region - change on year
seasonally adjusted



Source: Labour Force Survey, ONS

Table 1.5: Employment, ILO unemployment and inactivity rates by gender, Oct-Dec 2021
seasonally adjusted

	Gender	Rate (%)	Scotland				UK				
			Rate (%)	change on Jul-Sep 2021 %pt	change on Oct-Dec 2020 %pt	Rate (%)	change on Jul-Sep 2021 %pt	change on Oct-Dec 2020 %pt			
Employment Rate*	People	74.1	-0.6	↓	0.8	↑	75.5	0.1	↑	0.9	↑
	Men	76.2	-0.5	↓	1.2	↑	78.8	0.1	↑	0.9	↑
	Women	72.2	-0.8	↓	0.3	↑	72.2	0.1	↑	0.8	↑
Unemployment Rate**	People	4.1	0.0	↔	-0.5	↓	4.1	-0.2	↓	-1.2	↓
	Men	4.5	-0.1	↓	-1.0	↓	4.2	-0.2	↓	-1.2	↓
	Women	3.6	0.1	↑	0.1	↑	3.9	-0.2	↓	-1.1	↓
Inactivity Rate*	People	22.6	0.6	↑	-0.5	↓	21.2	0.1	↑	0.1	↑
	Men	20.1	0.5	↑	-0.4	↓	17.7	0.1	↑	0.1	↑
	Women	25.0	0.8	↑	-0.5	↓	24.7	0.0	↔	0.1	↑

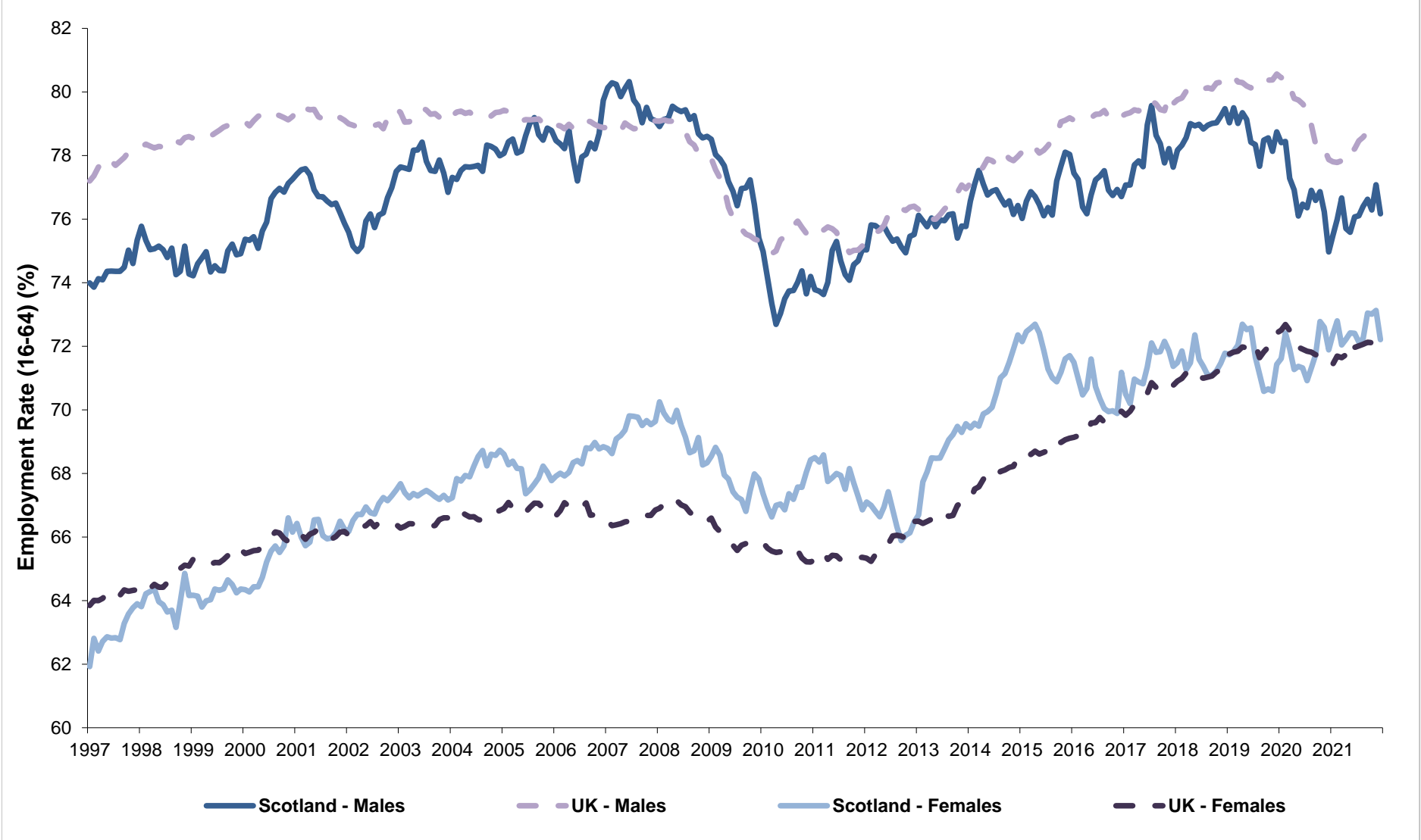
Source: Labour Force Survey, ONS

Note: * Denominator = population of aged 16-64

**Denominator = Economically active population

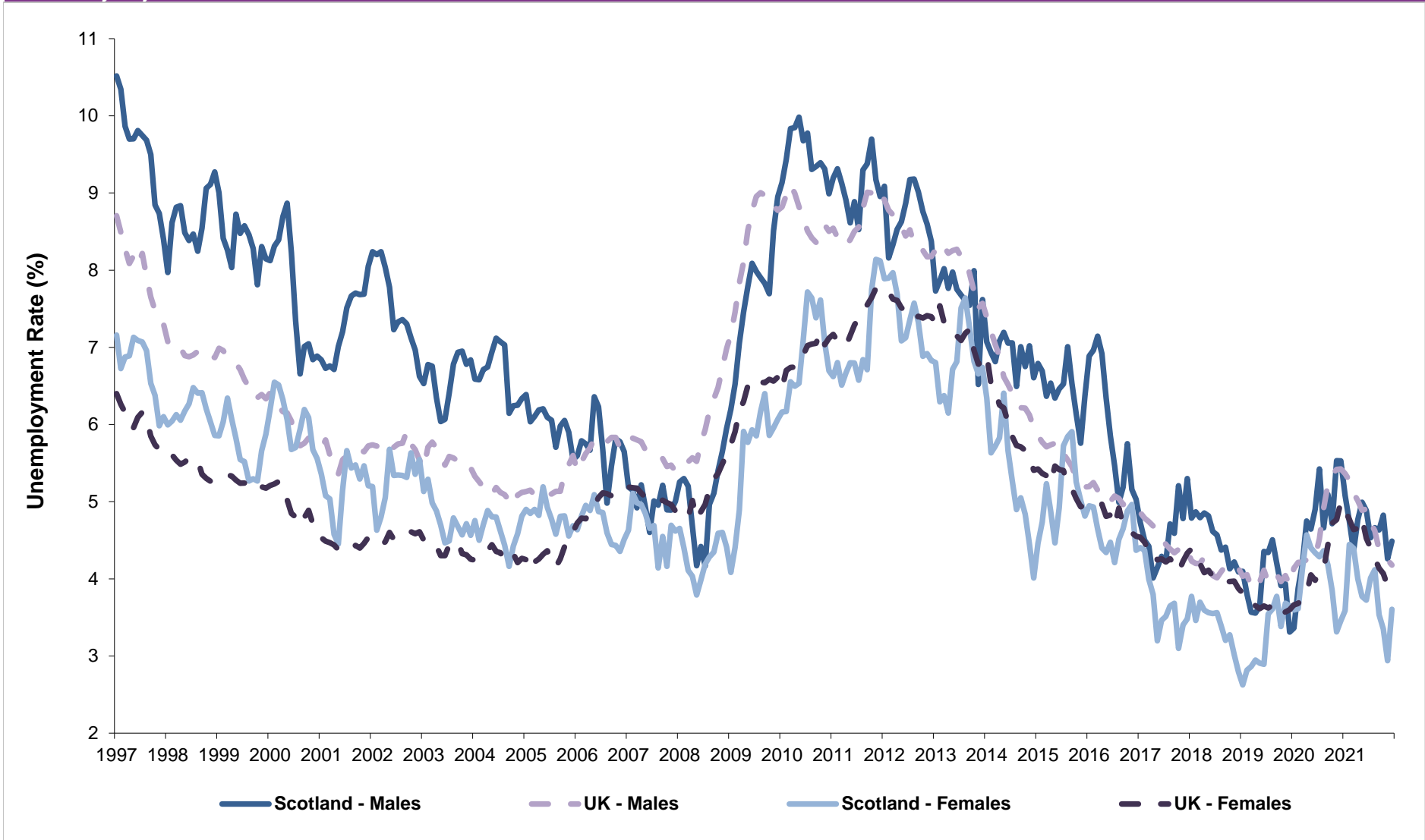
IMPORTANT NOTE: Labour Force Survey (LFS) estimates from Jan-Mar 2020 to Feb-Apr 2021 were reweighted in July 2021 to new populations derived using growth rates from HM Revenue and Customs (HMRC) Real Time Information (RTI) to allow for different trends during the COVID-19 pandemic. Annual comparisons within this table are therefore based on estimates which may differ from those previously published. For further information, see Notes (page 43).

Chart 1.11: Employment rate by gender (16-64), Scotland and UK, 1997-2021
seasonally adjusted



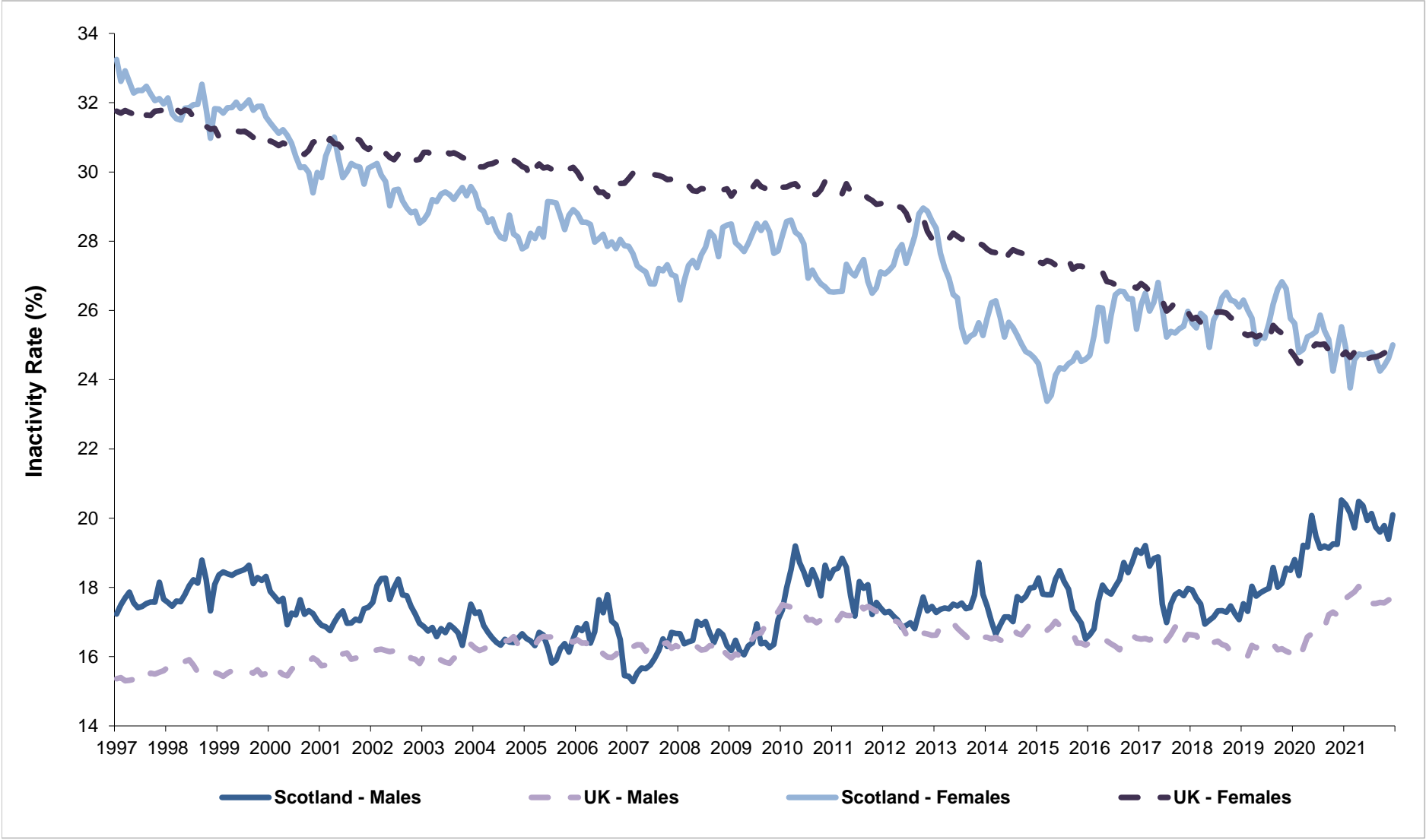
Source: Labour Force Survey, ONS

Chart 1.12: Unemployment rate by gender (16+), Scotland and UK, 1997-2021
seasonally adjusted



Source: Labour Force Survey, ONS

Chart 1.13: Inactivity rate by gender (16-64), Scotland, UK 1997-2021
seasonally adjusted



Source: Labour Force Survey, ONS

Table 1.6a: Employment, ILO unemployment and inactivity rates by age group, Scotland and UK, Annual Population Survey: Oct 2020 - Sep 2021

Age Group	Scotland						UK				
	Rate (%)	change on Oct 2019 - Sep 2020		change on Oct 2010 - Sep 2011		Rate (%)	change on Oct 2019 - Sep 2020		change on Oct 2010 - Sep 2011		
		%pt	%pt	%pt	%pt		%pt	%pt			
Employment Rate**	16-24	53.4	1.0	↑	-1.2	↓	50.5	-2.5	↓	1.1	↑
	25-34	82.0	-0.7	↓	2.7	↑	83.8	-0.5	↓	5.9	↑
	35-49	81.9	-1.7	↓	1.4	↑	84.7	-0.3	↓	4.1	↑
	50-64	68.2	-1.7	↓	4.7	↑	70.8	-1.0	↓	6.6	↑
	65+	8.9	-0.1	↓	2.4	↑	10.3	-0.4	↓	1.9	↑
Unemployment Rate***	16-24	10.4	-1.2	↓	-10.7	↓	13.3	0.7	↑	-7.5	↓
	25-34	3.3	0.1	↑	-4.5	↓	4.1	0.3	↑	-3.6	↓
	35-49	3.1	0.8	↑	-2.1	↓	3.3	0.6	↑	-2.1	↓
	50-64	3.8	1.3	↑	-0.7	↓	3.7	0.9	↑	-1.1	↓
	65+	2.2	1.0	↑	-0.2	↓	2.2	0.3	↑	-0.1	↓
Inactivity Rate**	16-24	40.4	-0.3	↓	9.6	↑	41.8	2.4	↑	4.1	↑
	25-34	15.2	0.7	↑	1.2	↑	12.6	0.2	↑	-3.0	↓
	35-49	15.4	1.0	↑	0.4	↑	12.3	-0.3	↓	-2.4	↓
	50-64	29.1	0.8	↑	-4.4	↓	26.5	0.4	↑	-6.1	↓
	65+	90.9	0.0	↔	-2.4	↓	89.5	0.3	↑	-1.9	↓

Source: Annual Population Survey, ONS

* data not available

** Denominator = population in age group

*** Denominator = Economically active population in age group (where economically active is defined as those in employment plus those who are unemployed)

Table 1.6b: Employment, ILO unemployment and inactivity rates by age group, Scotland and UK, Labour Force Survey: Oct-Dec 2021

Official Statistics - not seasonally adjusted

Age Group	Scotland						UK				
	Rate (%)	change on Oct-Dec 2020		change on Oct-Dec 2011		Rate (%)	change on Oct-Dec 2020		change on Oct-Dec 2011		
		%pt	%pt	%pt	%pt		%pt	%pt			
Employment Rate**	16-24	58.8	3.8	↑	5.9	↑	55.1	3.7	↑	5.3	↑
	25-34	82.3	0.4	↑	2.8	↑	84.3	-0.2	↓	6.4	↑
	35-49	84.0	2.1	↑	2.6	↑	85.7	1.2	↑	4.2	↑
	50-64	66.7	-2.0	↓	2.1	↑	70.7	-0.2	↓	5.6	↑
	65+	10.4	1.0	↑	4.3	↑	10.5	-0.1	↓	1.9	↑
Unemployment Rate***	16-24	6.4	-3.3	↓	-18.0	↓	10.9	-3.6	↓	-11.1	↓
	25-34	5.0	1.7	↑	-1.6	↓	3.6	-0.7	↓	-4.3	↓
	35-49	2.7	-1.5	↓	-3.0	↓	2.8	-1.0	↓	-2.7	↓
	50-64	3.9	0.1	↑	-0.6	↓	3.2	-1.1	↓	-2.0	↓
	65+	*	*	-	*	-	2.3	0.1	↑	-0.7	↓
Inactivity Rate**	16-24	37.2	-1.9	↓	7.1	↑	38.1	-1.7	↓	2.0	↑
	25-34	13.4	-1.9	↓	-1.5	↓	12.6	0.8	↑	-2.8	↓
	35-49	13.7	-0.9	↓	0.0	↔	11.9	-0.4	↓	-2.0	↓
	50-64	30.6	2.0	↑	-1.8	↓	27.0	1.0	↑	-4.3	↓
	65+	89.6	-0.7	↓	-4.3	↓	89.2	0.1	↑	-1.9	↓

Source: Labour Force Survey, ONS

* data not available

** Denominator = population in age group

*** Denominator = Economically active population in age group (where economically active is defined as those in employment plus those who are unemployed).

Quality indicator

Shaded estimates are based on a small sample size. This may result in a less precise estimates, which should be used with caution.

Unshaded estimates are based on a larger sample size. This is likely to result in estimates of higher precision, although they will still be subject to some sampling variability.

Note on data sources: The Labour Force Survey (LFS) is a survey of households collected and published by the Office for National Statistics (ONS). Further information on reliability can be accessed in the ONS publication at: <https://www.ons.gov.uk/employmentandlabourmarket/peopleinwork/employmentandemployeetypes/methodologies/measuringandreportingreliability/labourforcesurveyandannualpopulationsurveyestimates>

The LFS estimates in Table 1.6b are from the same source as the headline figures but due to the relatively small sample sizes and subsequent sampling variability, the figures should be used with caution and are designated as Official Statistics. The preferred source of labour market indicators by age band for regions/countries of the UK is the Annual Population Survey (APS).

The APS estimates are classified as National Statistics as they are based on a larger sample size, but are not as current as LFS estimates. Regional estimates for the unemployment rate may be quite volatile, which needs to be allowed for when considering the pattern of change over time and sample sizes are also smaller for sub groups such as 16-24 year olds which can also affect volatility. Sampling variability information is published at:

<https://www.ons.gov.uk/employmentandlabourmarket/peopleinwork/employmentandemployeetypes/datasets/samplingvariabilityandrevisionssummaryforregionallabourmarketstatistics02>

IMPORTANT NOTE: Labour Force Survey (LFS) estimates from Jan-Mar 2020 to Feb-Apr 2021 were reweighted in July 2021 to new populations derived using growth rates from HM Revenue and Customs (HMRC) Real Time Information (RTI) to allow for different trends during the COVID-19 pandemic. Annual Population Survey (APS) responses for periods from April 2019 - March 2020 onwards were also reweighted by the same method in August 2021. Annual comparisons within this table are therefore based on estimates which may differ from those previously published. For further information, see Notes (page 43).

Table 2.1a: Employment, ILO unemployment and inactivity for the 16-24 age group, Scotland and UK, Annual Population Survey (APS): Oct 2020 - Sep 2021

	Level	Level ('000)		Rate %	Rate		Rate	Rate	
		change on Oct 2019 - Sep 2020	change on Oct 2010 - Sep 2011		change on Oct 2019 - Sep 2020 (%pts)	change on Oct 2010 - Sep 2011 (%pts)			
Employment*									
Scotland	293	0 ↔	-47 ↓	53.4	1.0 ↑	-1.2 ↓			
UK	3,437	-201 ↓	-199 ↓	50.5	-2.5 ↓	1.1 ↑			
ILO Unemployment**									
Scotland	34	-4 ↓	-57 ↓	10.4	-1.2 ↓	-10.7 ↓			
UK	527	2 ↑	-425 ↓	13.3	0.7 ↑	-7.5 ↓			
Inactivity*									
Scotland	222	-6 ↓	29 ↑	40.4	-0.3 ↓	9.6 ↑			
UK	2,842	135 ↑	74 ↑	41.8	2.4 ↑	4.1 ↑			

Source: Annual Population Survey (APS), ONS

Notes: *denominator = 16-24 population; ** denominator = economically active population aged 16-24

Table 2.1b: Employment, ILO unemployment and inactivity for the 16-24 age group, Scotland and UK, Labour Force Survey (LFS): Oct-Dec 2021
not seasonally adjusted (Official Statistics)

	Level	Level ('000)		Rate (%)	Rate		Rate	Rate	
		change on Oct-Dec 2020	change on Oct-Dec 2011		change on Oct-Dec 2020 (%pts)	change on Oct-Dec 2011 (%pts)			
Employment*									
Scotland	321	18 ↑	-9 ↓	58.8	3.8 ↑	5.9 ↑			
UK	3,743	234 ↑	73 ↑	55.1	3.7 ↑	5.3 ↑			
ILO Unemployment**									
Scotland	22	-11 ↓	-84 ↓	6.4	-3.3 ↓	-18.0 ↓			
UK	458	-137 ↓	-578 ↓	10.9	-3.6 ↓	-11.1 ↓			
Inactivity*									
Scotland	204	-13 ↓	15 ↑	37.2	-1.9 ↓	7.1 ↑			
UK	2,590	-129 ↓	-69 ↓	38.1	-1.7 ↓	2.0 ↑			

Source: Labour Force Survey (LFS), ONS

Notes: *denominator = 16-24 population; ** denominator = economically active population aged 16-24

Quality indicator

Shaded estimates are based on a small sample size. This may result in a less precise estimates, which should be used with caution.

Unshaded estimates are based on a larger sample size. This is likely to result in estimates of higher precision, although they will still be subject to some sampling variability.

Note on data sources: The Labour Force Survey (LFS) is a survey of households collected and published by the Office for National Statistics (ONS). Further information on reliability can be accessed in the ONS publication at: <https://www.ons.gov.uk/employmentandlabourmarket/peopleinwork/employmentandemployeetypes/methodologies/measuringandreportingreliabilityoflabourforcesurveyandannualpopulationssurveyestimates>

The LFS estimates in Table 2.1b are from the same source as the headline figures but due to the relatively small sample sizes and subsequent sampling variability, the figures should be used with caution and are designated as Official Statistics. The preferred source of labour market indicators by age band for regions/countries of the UK is the Annual Population Survey (APS).

The APS estimates are classified as National Statistics as they are based on a larger sample size, but are not as current as LFS estimates. Regional estimates for the unemployment rate may be quite volatile, which needs to be allowed for when considering the pattern of change over time and sample sizes are also smaller for sub groups such as 16-24 year olds which can also affect volatility. Sampling variability information is published at:

<https://www.ons.gov.uk/employmentandlabourmarket/peopleinwork/employmentandemployeetypes/datasets/samplingvariabilityandrevisionsummaryforregionallabourmarketstatistics02>

IMPORTANT NOTE: Labour Force Survey (LFS) estimates from Jan-Mar 2020 to Feb-Apr 2021 were reweighted in July 2021 to new populations derived using force rates from HM Revenue and Customs (HMRC) Real Time Information (RTI) to allow for different trends during the COVID-19 pandemic. Annual Population Survey (APS) responses for periods from April 2019 - March 2020 onwards were also reweighted by the same method in August 2021. Annual comparisons within this table are therefore based on estimates which may differ from those previously published. For further information, see Notes (page 43).

Charts 2.1 and 2.2: Employment and unemployment for the 16-24 age group, Scotland and UK (APS)

Chart 2.1: Employment rate for the 16-24 age group

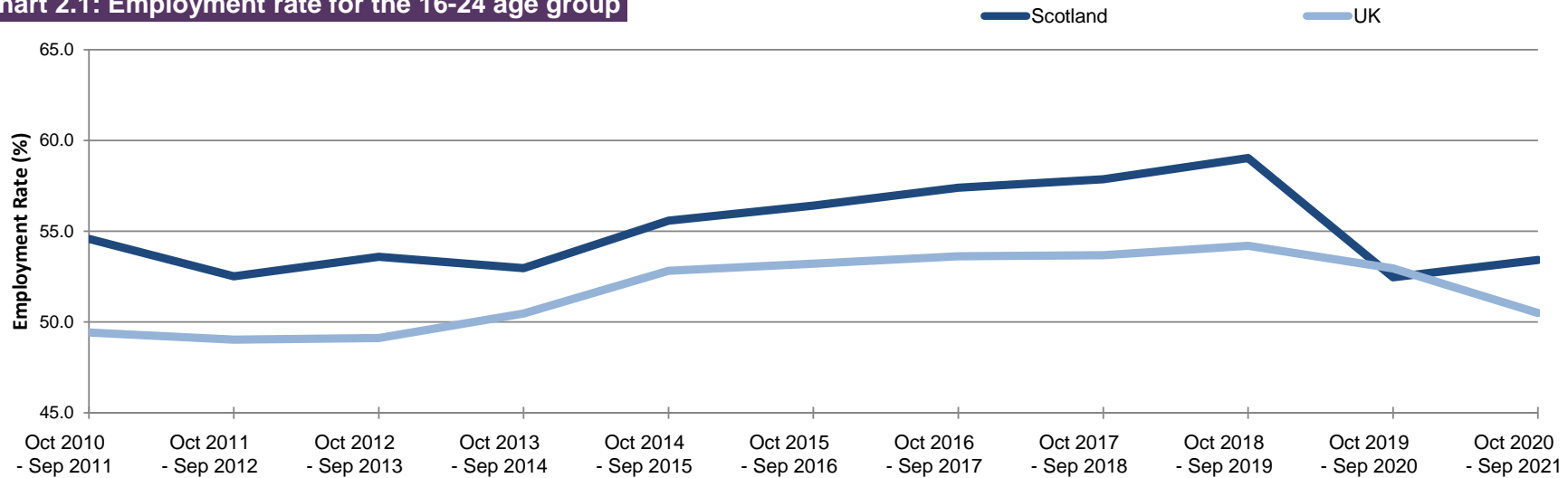
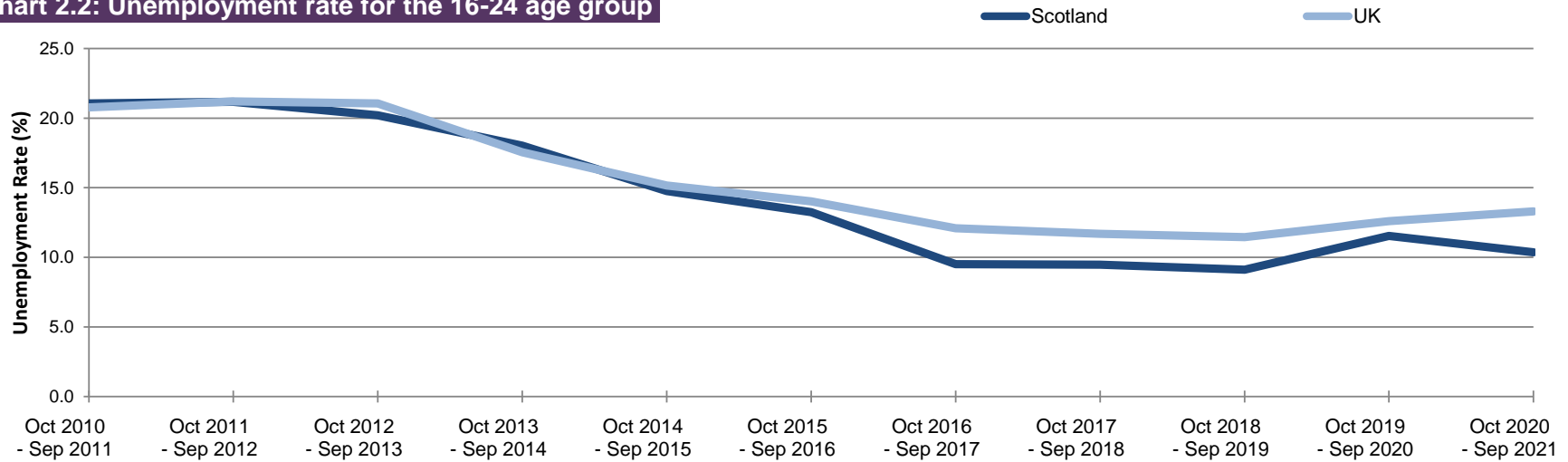


Chart 2.2: Unemployment rate for the 16-24 age group



Source: Annual Population Survey, ONS

Table 2.2: Employment, ILO unemployment and inactivity for the 16-24 age group by gender, Scotland and UK (APS), Oct 2020 - Sep 2021

Scotland										
	Level	Level ('000)				Rate (%)	Rate			
		change on Oct 2019 - Sep 2020		change on Oct 2010 - Sep 2011			change on Oct 2019 - Sep 2020		change on Oct 2010 - Sep 2011	
Employment*										
Male	144	-3	↓	-28	↓	52.1	-0.1	↓	-3.1	↓
Female	149	3	↑	-19	↓	54.8	2.0	↑	0.8	↑
ILO Unemployment**										
Male	21	3	↑	-32	↓	12.8	1.6	↑	-10.7	↓
Female	13	-7	↓	-25	↓	7.9	-4.0	↓	-10.5	↓
Inactivity*										
Male	111	-5	↓	25	↑	40.3	-1.0	↓	12.4	↑
Female	111	-1	↓	5	↑	40.6	0.4	↑	6.7	↑
UK										
	Level	Level ('000)				Rate (%)	Rate			
		change on Oct 2019 - Sep 2020		change on Oct 2010 - Sep 2011			change on Oct 2019 - Sep 2020		change on Oct 2010 - Sep 2011	
Employment*										
Male	1,741	-103	↓	-99	↓	50.1	-2.4	↓	0.4	↑
Female	1,696	-99	↓	-100	↓	50.9	-2.5	↓	1.7	↑
ILO Unemployment**										
Male	290	-6	↓	-273	↓	14.3	0.5	↑	-9.1	↓
Female	237	8	↑	-152	↓	12.3	0.9	↑	-5.6	↓
Inactivity*										
Male	1,444	73	↑	142	↑	41.6	2.5	↑	6.4	↑
Female	1,398	61	↑	-68	↓	42.0	2.2	↑	1.8	↑

Source: Annual Population Survey, ONS

Notes: *denominator = 16-24 population; ** denominator = economically active population aged 16-24

IMPORTANT NOTE: Annual Population Survey (APS) responses for periods from April 2019 - March 2020 onwards were reweighted in August 2021 to new populations derived using growth rates from HM Revenue and Customs (HMRC) Real Time Information (RTI) to allow for different trends during the COVID-19 pandemic. Annual comparisons within this table are therefore based on estimates which may differ from those previously published. For further information, see Notes (page 43).

Charts 2.3 and 2.4: Employment and unemployment for the 16-24 age group by gender, Scotland (APS)

Chart 2.3: Employment rate for the 16-24 age group by gender

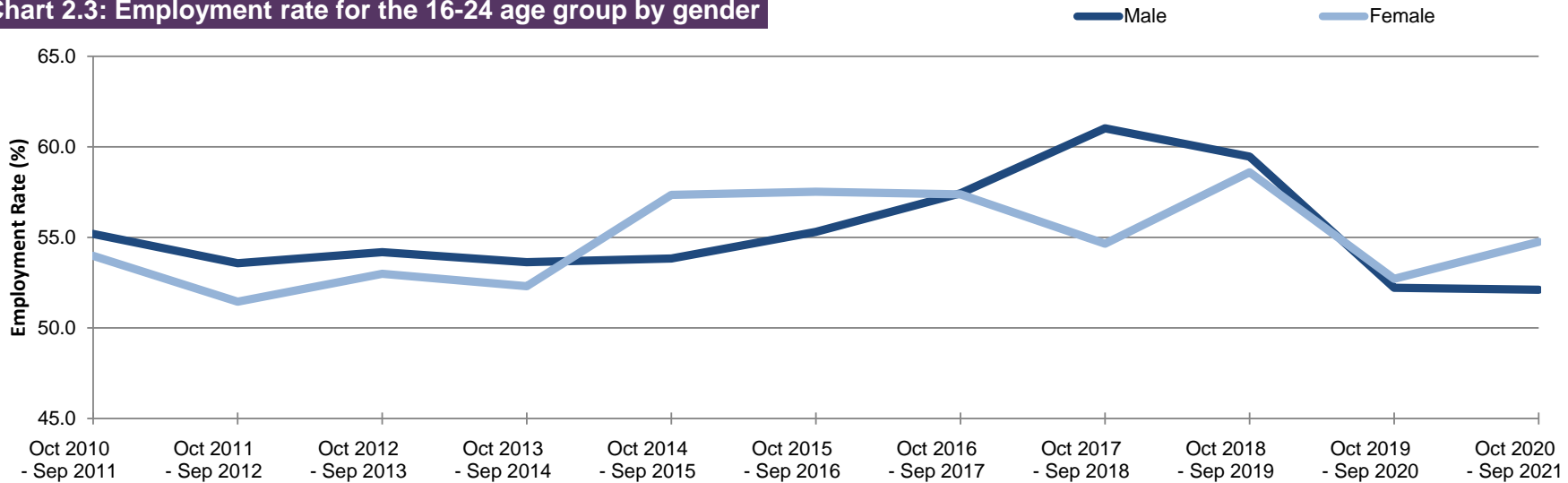
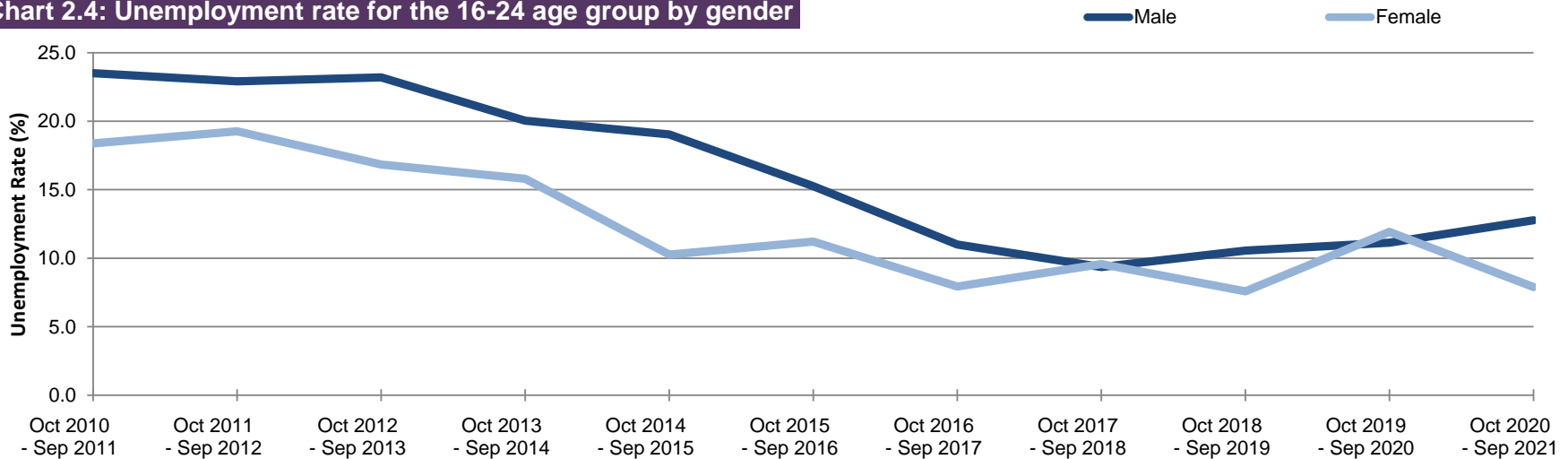


Chart 2.4: Unemployment rate for the 16-24 age group by gender



Source: Annual Population Survey, ONS

Table 2.3: Unemployment for the 16-24 age group by Government Office Region (LFS), Oct-Dec 2021
not seasonally adjusted (Official Statistics)

	Level ('000)				Rate		
	Level	change on Oct-Dec 2020	change on Oct-Dec 2011	Rate (%)	change on Oct-Dec 2020 (%pt)	change on Oct-Dec 2011 (%pt)	
North East	29	3 ↑	-16 ↓	15.8	1.5 ↑	-5.2 ↓	
North West	48	-20 ↓	-88 ↓	10.6	-4.3 ↓	-14.2 ↓	
Yorkshire and The Humber	32	-7 ↓	-80 ↓	8.9	-1.7 ↓	-18.4 ↓	
East Midlands	32	-34 ↓	-50 ↓	10.0	-9.4 ↓	-13.5 ↓	
West Midlands	54	-12 ↓	-40 ↓	13.4	-3.4 ↓	-9.8 ↓	
East	35	-14 ↓	-41 ↓	9.1	-4.5 ↓	-8.2 ↓	
London	93	-14 ↓	-36 ↓	18.1	-4.1 ↓	-6.4 ↓	
South East	61	8 ↑	-46 ↓	10.5	0.9 ↑	-6.1 ↓	
South West	33	-18 ↓	-35 ↓	8.7	-5.9 ↓	-8.2 ↓	
Wales	14	-12 ↓	-48 ↓	7.1	-6.7 ↓	-20.4 ↓	
Northern Ireland	6	-5 ↓	-14 ↓	7.0	-4.9 ↓	-11.5 ↓	
Scotland	22	-11 ↓	-84 ↓	6.4	-3.3 ↓	-18.0 ↓	
United Kingdom	458	-137 ↓	-578 ↓	10.9	-3.6 ↓	-11.1 ↓	
England	416	-110 ↓	-432 ↓	11.7	-3.4 ↓	-9.9 ↓	

Source: Labour Force Survey, ONS

Table 2.4: Employment for the 16-24 age group by Government Office Region (LFS), Oct-Dec 2021
not seasonally adjusted (Official Statistics)

	Level ('000)				Rate		
	Level	change on Oct-Dec 2020	change on Oct-Dec 2011	Rate (%)	change on Oct-Dec 2020 (%pt)	change on Oct-Dec 2011 (%pt)	
North East	154	-2 ↓	-15 ↓	54.3	-0.4 ↓	1.1 ↑	
North West	404	17 ↑	-8 ↓	53.8	2.5 ↑	5.1 ↑	
Yorkshire and The Humber	322	-4 ↓	24 ↑	53.3	-0.5 ↓	7.8 ↑	
East Midlands	290	13 ↑	23 ↑	57.2	2.9 ↑	7.4 ↑	
West Midlands	347	23 ↑	39 ↑	55.0	3.9 ↑	8.7 ↑	
East	352	36 ↑	-12 ↓	61.2	6.4 ↑	3.1 ↑	
London	420	45 ↑	23 ↑	45.6	4.9 ↑	5.3 ↑	
South East	518	18 ↑	-18 ↓	57.9	2.3 ↑	1.0 ↑	
South West	345	46 ↑	9 ↑	62.7	8.6 ↑	4.4 ↑	
Wales	184	23 ↑	21 ↑	55.4	7.3 ↑	11.5 ↑	
Northern Ireland	86	1 ↑	-4 ↓	44.0	1.0 ↑	2.9 ↑	
Scotland	321	18 ↑	-9 ↓	58.8	3.8 ↑	5.9 ↑	
United Kingdom	3,743	234 ↑	73 ↑	55.1	3.7 ↑	5.3 ↑	
England	3,152	191 ↑	65 ↑	55.1	3.6 ↑	4.9 ↑	

Source: Labour Force Survey, ONS

Quality indicator

Shaded estimates are based on a small sample size. This may result in a less precise estimates, which should be used with caution.

Unshaded estimates are based on a larger sample size. This is likely to result in estimates of higher precision, although they will still be subject to some sampling variability.

Note on data sources: The Labour Force Survey (LFS) is a survey of households collected and published by the Office for National Statistics (ONS). Further information on reliability can be accessed in the ONS publication at: <https://www.ons.gov.uk/employmentandlabourmarket/peopleinwork/employmentandemployeetypes/methodologies/measuringandreportingreliabilityoflabourforcesurveyandannualpopulationurveyestimates>

The LFS estimates are from the same source as the headline figures but due to the relatively small sample sizes and subsequent sampling variability, the figures should be used with caution and are designated as Official Statistics. The preferred source of labour market indicators by age band for regions/countries of the UK is the Annual Population Survey (APS). The APS estimates are available in the headline indicator tables (HI01 to HI12) of the ONS Labour market in the regions of the UK release: <https://www.ons.gov.uk/employmentandlabourmarket/peopleinwork/employmentandemployeetypes/bulletins/regionallabourmarket/previousReleases>

IMPORTANT NOTE: Labour Force Survey (LFS) estimates from Jan-Mar 2020 to Feb-Apr 2021 were reweighted in July 2021 to new populations derived using growth rates from HM Revenue and Customs (HMRC) Real Time Information (RTI) to allow for different trends during the COVID-19 pandemic. Annual comparisons within this table are therefore based on estimates which may differ from those previously published. For further information, see Notes (page 43).

Table 3.1a: Employment rates and levels of the population aged 16-64 by disability status, Scotland 2014-2021 (APS)

	Equality Act Disabled Employment		Not Equality Act Disabled Employment		Disabled Employment Rate Gap (%pt)
	Rate	Level (000s)	Rate	Level (000s)	
Oct 2013 - Sep 2014	40.9	249	79.1	2,206	38.2
Oct 2014 - Sep 2015	41.7	255	80.0	2,234	38.3
Oct 2015 - Sep 2016	42.9	277	79.9	2,211	37.1
Oct 2016 - Sep 2017	43.8	286	81.0	2,243	37.1
Oct 2017 - Sep 2018	46.8	315	81.2	2,232	34.3
Oct 2018 - Sep 2019	47.8	329	81.6	2,231	33.9
Oct 2019 - Sep 2020	47.7	341	81.1	2,189	33.3
Oct 2020 - Sep 2021	49.2	394	80.2	2,090	31.0
<i>change on year (% point for rate)</i>	1.5	53	-0.8	-98	-2.3

Source: Annual Population Survey, ONS

Table 3.1b: Employment rates and levels of the population aged 16-64 by disability status, Scotland 2013-2021 (LFS) not seasonally adjusted

	Equality Act Disabled Employment		Not Equality Act Disabled Employment		Disabled Employment Rate Gap (%pt)
	Rate	Level (000s)	Rate	Level (000s)	
Oct-Dec 2013	41.3	242	79.1	2,223	37.8
Oct-Dec 2014	40.8	236	81.2	2,287	40.3
Oct-Dec 2015	44.7	264	81.3	2,282	36.6
Oct-Dec 2016	41.9	279	81.7	2,250	39.8
Oct-Dec 2017	46.5	299	81.1	2,253	34.6
Oct-Dec 2018	46.1	287	82.1	2,293	36.0
Oct-Dec 2019	50.0	358	81.5	2,207	31.5
Oct-Dec 2020	44.4	338	81.6	2,165	37.2
Oct-Dec 2021	48.0	394	82.6	2,123	34.5
<i>change on year (% point for rate)</i>	3.7	57	1.0	-42	-2.7

Source: Labour Force Survey, ONS

Questions used to derive current disability status of a person were changed in the April-June 2013 dataset. Subsequent datasets are therefore not directly comparable to equivalent periods in earlier years. See Notes (page 43) for further information.

Information is shown from the Labour Force Survey (LFS) and the Annual Population Survey (APS) for the same measure. Although the LFS is more timely, the APS is based on a larger sample size and therefore has a higher degree of reliability.

IMPORTANT NOTE: Labour Force Survey (LFS) estimates from Jan-Mar 2020 to Feb-Apr 2021 were reweighted in July 2021 to new populations derived using growth rates from HM Revenue and Customs (HMRC) Real Time Information (RTI) to allow for different trends during the COVID-19 pandemic. Annual Population Survey (APS) responses for periods from April 2019 - March 2020 onwards were also reweighted by the same method in August 2021. Annual comparisons within this table are therefore based on estimates which may differ from those previously published. For further information, see Notes (page 43).

Table 3.2: Employment rates and levels of the population aged 16-64 by ethnicity and gender, Scotland, 2011 - 2021
not seasonally adjusted

All

	White Employment		Minority Ethnic Employment		Ethnicity Employment Rate Gap (%pt)
	Rate	Level (000s)	Rate	Level (000s)	
Oct 2011 - Sep 2012	71.2	2,343	56.8	75	14.4
Oct 2012 - Sep 2013	71.1	2,337	55.7	72	15.5
Oct 2013 - Sep 2014	72.7	2,383	62.4	83	10.3
Oct 2014 - Sep 2015	73.7	2,407	57.1	82	16.6
Oct 2015 - Sep 2016	73.7	2,385	57.5	103	16.2
Oct 2016 - Sep 2017	74.7	2,432	58.7	104	15.9
Oct 2017 - Sep 2018	75.1	2,461	58.0	96	17.2
Oct 2018 - Sep 2019	75.6	2,455	60.6	118	15.0
Oct 2019 - Sep 2020	74.5	2,428	63.5	114	11.1
Oct 2020 - Sep 2021	73.6	2,391	59.9	105	13.7
<i>change on year (% point for rate)</i>	-0.9	-37	-3.6	-9	2.6

Male

	White Employment		Minority Ethnic Employment		Ethnicity Employment Rate Gap (%pt)
	Rate	Level (000s)	Rate	Level (000s)	
Oct 2011 - Sep 2012	74.9	1,204	71.4	46	3.6
Oct 2012 - Sep 2013	74.5	1,196	66.7	42	7.8
Oct 2013 - Sep 2014	76.3	1,220	72.8	48	3.5
Oct 2014 - Sep 2015	76.6	1,220	69.6	50	7.0
Oct 2015 - Sep 2016	77.0	1,219	70.5	60	6.5
Oct 2016 - Sep 2017	77.5	1,234	71.8	62	5.8
Oct 2017 - Sep 2018	78.7	1,260	69.7	55	9.0
Oct 2018 - Sep 2019	78.6	1,249	69.7	64	8.9
Oct 2019 - Sep 2020	76.7	1,221	72.6	63	4.0
Oct 2020 - Sep 2021	75.4	1,202	73.4	58	2.0
<i>change on year (% point for rate)</i>	-1.3	-19	0.8	-5	-2.1

Female

	White Employment		Minority Ethnic Employment		Ethnicity Employment Rate Gap (%pt)
	Rate	Level (000s)	Rate	Level (000s)	
Oct 2011 - Sep 2012	67.6	1,139	42.8	29	24.9
Oct 2012 - Sep 2013	67.9	1,141	44.9	30	22.9
Oct 2013 - Sep 2014	69.2	1,162	52.0	34	17.2
Oct 2014 - Sep 2015	71.0	1,187	44.7	32	26.3
Oct 2015 - Sep 2016	70.5	1,166	45.5	42	25.0
Oct 2016 - Sep 2017	71.9	1,198	46.4	42	25.5
Oct 2017 - Sep 2018	71.8	1,200	47.4	41	24.3
Oct 2018 - Sep 2019	72.8	1,206	52.5	54	20.2
Oct 2019 - Sep 2020	72.5	1,207	54.8	51	17.6
Oct 2020 - Sep 2021	71.8	1,189	48.8	47	23.0
<i>change on year (% point for rate)</i>	-0.6	-18	-6.0	-4	5.4

Source: Annual Population Survey, ONS (Oct-Sep datasets)

IMPORTANT NOTE: Annual Population Survey (APS) responses for periods from April 2019 - March 2020 onwards were reweighted in August 2021 to new populations derived using growth rates from HM Revenue and Customs (HMRC) Real Time Information (RTI) to allow for different trends during the COVID-19 pandemic. Annual comparisons within this table are therefore based on estimates which may differ from those previously published. For further information, see Notes (page 43).

Table 3.3: Employment patterns, Scotland, Oct-Dec 2021, (Thousands)
not seasonally adjusted

	Oct-Dec 2021 (000s)	change on Oct- Dec 2020 (000s)		change on Oct- Dec 2011 (000s)	
Total‡	2,637	30	↑	157	↑
Employees‡	2,351	48	↑	176	↑
Self employed‡	272	-25	↓	-14	↓
Unpaid family workers	10	6	↑	2	↑
Government-supported training and employment programmes	5	1	↑	-7	↓
Full-time workers	1,956	8	↑	166	↑
Part-time workers	680	22	↑	-5	↓
Workers with second jobs	109	21	↑	7	↑
Temporary workers	144	26	↑	12	↑
All males in employment					
Total‡	1,333	26	↑	48	↑
Employees‡	1,148	27	↑	68	↑
Self employed‡	174	-6	↓	-22	↓
Unpaid family workers	9	6	↑	5	↑
Government-supported training and employment programmes	3	-1	↓	-4	↓
Full-time workers	1,145	-5	↓	27	↑
Part-time workers	189	32	↑	24	↑
Workers with second jobs	53	21	↑	8	↑
Temporary workers	58	-1	↓	-8	↓
All females in employment					
Total‡	1,304	4	↑	109	↑
Employees‡	1,203	21	↑	108	↑
Self employed‡	98	-19	↓	8	↑
Unpaid family workers	*	*	■	*	■
Government-supported training and employment programmes	*	*	■	*	■
Full-time workers	811	13	↑	139	↑
Part-time workers	491	-10	↓	-29	↓
Workers with second jobs	56	0	↔	-1	↓
Temporary workers	86	27	↑	20	↑

Source: Labour Force Survey, ONS

‡ Includes people who did not state whether they worked part-time or full-time.

* Estimate suppressed as below reliability threshold.

Quality indicator

Shaded estimates are based on a small sample size. This may result in a less precise estimates, which should be used with caution.

Unshaded estimates are based on a larger sample size. This is likely to result in estimates of higher precision, although they will still be subject to some sampling variability.

IMPORTANT NOTE: Labour Force Survey (LFS) estimates from Jan-Mar 2020 to Feb-Apr 2021 were reweighted in July 2021 to new populations derived using growth rates from HM Revenue and Customs (HMRC) Real Time Information (RTI) to allow for different trends during the COVID-19 pandemic. Annual comparisons within this table are therefore based on estimates which may differ from those previously published. For further information, see Notes (page 43).

Table 3.4: Underemployment, Scotland and UK, 2012-2021
not seasonally adjusted

	Scotland		UK	
	Rate (%)	Level (000s)	Rate (%)	Level (000s)
Oct 2011 - Sep 2012	10.1	247	10.0	2,889
Oct 2012 - Sep 2013	9.4	229	10.0	2,927
Oct 2013 - Sep 2014	9.1	229	9.4	2,805
Oct 2014 - Sep 2015	8.8	225	8.7	2,663
Oct 2015 - Sep 2016	8.9	227	8.4	2,594
Oct 2016 - Sep 2017	8.0	209	7.8	2,462
Oct 2017 - Sep 2018	7.7	202	7.2	2,272
Oct 2018 - Sep 2019	7.1	187	7.0	2,235
Oct 2019 - Sep 2020	7.8	204	7.6	2,441
Oct 2020 - Sep 2021	7.3	189	7.1	2,266
<i>change on year (%pt for rate)</i>	-0.5	-16	-0.5	-175
<i>change on Oct 2011 - Sep 2012* (%pt for rate)</i>	-2.7	-59	-2.8	-623

Source: Annual Population Survey, ONS

*although longer term change is usually measured over 10 years, estimates for October 2010 - September 2011 have been temporarily suspended while an issue with the underemployment estimate for this period is investigated.

Notes:

1 - Levels and rates based on working population aged 16 and over

2 - Underemployment rate based on those in employment (excludes those who did not respond to underemployment questions)

3 - Underemployment includes:

- those looking for more hours in their current role at same rate of pay
- those looking for an additional job
- those looking for a replacement job with more hours than their current job.

IMPORTANT NOTE: Annual Population Survey (APS) responses for periods October 2019 - September 2020 and October 2020 - September 2021 have been weighted to new populations derived using growth rates from HM Revenue and Customs (HMRC) Real Time Information (RTI) to allow for different trends during the COVID-19 pandemic. Annual comparisons within this table are therefore based on estimates which may differ from those previously published. For further information, see Notes (page 43).

Table 3.5: Employment rates by highest qualification held and gender, Scotland and UK, Oct 2020 - Sep 2021
not seasonally adjusted

	Scotland			UK		
	Oct 2020 - Sep 2021 (%)	change on Oct 2019 - Sep 2020 (%pt)		Oct 2020 - Sep 2021 (%)	change on Oct 2019 - Sep 2020 (%pt)	
All						
Degree level and above	84.3	0.1	↑	86.0	-0.4	↓
SVQ 4	79.3	-0.5	↓	80.4	-0.6	↓
SVQ 3	69.5	-2.1	↓	74.1	-1.4	↓
SVQ 2	62.6	-2.9	↓	65.8	-2.1	↓
SVQ 1	59.0	8.6	↑	60.8	-2.8	↓
Other qualification	66.8	-5.6	↓	72.6	-2.1	↓
No qualifications	43.2	-5.3	↓	42.7	-1.2	↓
Males						
Degree level and above	86.0	0.3	↑	88.4	-0.6	↓
SVQ 4	82.8	-0.9	↓	84.4	-0.4	↓
SVQ 3	72.2	-3.5	↓	77.2	-1.7	↓
SVQ 2	66.1	-2.2	↓	70.0	-2.1	↓
SVQ 1	67.9	15.5	↑	68.2	0.0	↔
Other qualification	75.7	-6.0	↓	81.2	-2.0	↓
No qualifications	45.1	-5.8	↓	49.1	-2.3	↓
Females						
Degree level and above	82.9	-0.2	↓	83.8	-0.3	↓
SVQ 4	76.5	0.0	↔	76.9	-0.7	↓
SVQ 3	66.1	-0.2	↓	70.7	-0.9	↓
SVQ 2	59.7	-3.6	↓	61.9	-2.3	↓
SVQ 1	47.8	0.1	↑	52.4	-5.6	↓
Other qualification	57.0	-6.3	↓	62.1	-1.8	↓
No qualifications	41.2	-4.6	↓	35.1	-0.1	↓

Source: Annual Population Survey, ONS

IMPORTANT NOTE: Annual Population Survey (APS) responses for periods from April 2019 - March 2020 onwards were reweighted in August 2021 to new populations derived using growth rates from HM Revenue and Customs (HMRC) Real Time Information (RTI) to allow for different trends during the COVID-19 pandemic. Annual comparisons within this table are therefore based on estimates which may differ from those previously published. For further information, see Notes (page 43).

Table 4.1: Unemployment by duration, Annual Population Survey, Oct 2020 - Sep 2021
not seasonally adjusted

Scotland	Level (000s)	change on Oct 2019 - Sep 2020			
		Level (000s)		%	
Less than 6 months	56	-6	↓	-9.8	↓
6 months and less than 12 months	21	8	↑	65.2	↑
1 year and less than 2 years	19	8	↑	78.7	↑
2 years or more	16	2	↑	17.5	↑

UK	Level (000s)	change on Oct 2019 - Sep 2020			
		Level (000s)		%	
Less than 6 months	853	-59	↓	-6.5	↓
6 months and less than 12 months	309	104	↑	51.0	↑
1 year and less than 2 years	220	78	↑	54.6	↑
2 years or more	208	56	↑	37.0	↑

Source: Annual Population Survey, ONS

Note: Levels based on persons aged 16 and over

IMPORTANT NOTE: Annual Population Survey (APS) responses for periods from April 2019 - March 2020 onwards were reweighted in August 2021 to new populations derived using growth rates from HM Revenue and Customs (HMRC) Real Time Information (RTI) to allow for different trends during the COVID-19 pandemic. Annual comparisons within this table are therefore based on estimates which may differ from those previously published. For further information, see Notes (page 43).

Table 4.2: Model-based unemployment levels and rates by local authority, Oct 2020-Sep 2021
not seasonally adjusted

	Oct 2020-Sep 2021		change on Oct 2019-Sep 2020				change on Oct 2010-Sep 2011			
	Rate	Level	Rate (%pt)		Level Change	Rate (%pt)		Level Change		
Aberdeen City	4.4	5,600	1.0	↑	1,400	↑	-1.2	↓	-1,400	↓
Aberdeenshire	3.2	4,400	0.8	↑	1,000	↑	-0.7	↓	-1,100	↓
Angus	3.8	2,100	0.6	↑	300	↑	-3.1	↓	-1,800	↓
Argyll and Bute	3.7	1,400	0.7	↑	200	↑	-2.8	↓	-1,400	↓
City of Edinburgh	3.9	11,100	0.5	↑	1,400	↑	-2.8	↓	-6,300	↓
Clackmannanshire	4.4	1,000	0.4	↑	0	↔	-5.3	↓	-1,500	↓
Dumfries and Galloway	3.9	2,500	0.6	↑	400	↑	-3.4	↓	-2,700	↓
Dundee City	4.9	3,600	0.1	↑	100	↑	-4.7	↓	-3,400	↓
East Ayrshire	4.7	2,800	0.3	↑	200	↑	-5.8	↓	-3,600	↓
East Dunbartonshire	3.3	1,700	0.6	↑	300	↑	-2.8	↓	-1,400	↓
East Lothian	3.4	1,900	0.0	↔	100	↑	-3.6	↓	-1,600	↓
East Renfrewshire	3.8	1,600	0.9	↑	300	↑	-1.5	↓	-800	↓
Falkirk	3.9	3,200	0.1	↑	100	↑	-4.6	↓	-3,600	↓
Fife	4.4	7,600	0.2	↑	100	↑	-4.8	↓	-9,400	↓
Glasgow City	5.5	18,100	0.8	↑	3,100	↑	-6.0	↓	-15,400	↓
Highland	3.4	3,900	0.8	↑	700	↑	-1.8	↓	-2,500	↓
Inverclyde	4.2	1,600	-0.3	↓	0	↔	-5.8	↓	-2,400	↓
Midlothian	3.4	1,600	0.5	↑	200	↑	-4.3	↓	-1,800	↓
Moray	3.6	1,700	0.6	↑	300	↑	-1.6	↓	-800	↓
Na h-Eileanan Siar	3.3	400	0.7	↑	0	↔	-3.6	↓	-500	↓
North Ayrshire	5.3	3,000	0.6	↑	200	↑	-6.9	↓	-4,700	↓
North Lanarkshire	4.8	7,500	0.3	↑	0	↔	-5.5	↓	-10,100	↓
Orkney Islands	3.4	300	1.2	↑	0	↔	-0.6	↓	-200	↓
Perth and Kinross	3.4	2,600	0.4	↑	300	↑	-2.0	↓	-1,300	↓
Renfrewshire	4.2	3,600	0.4	↑	100	↑	-5.5	↓	-4,600	↓
Scottish Borders	4.0	2,100	1.3	↑	600	↑	-2.0	↓	-1,200	↓
Shetland Islands	2.4	300	-0.1	↓	0	↔	-1.1	↓	-200	↓
South Ayrshire	4.6	2,300	0.6	↑	200	↑	-4.7	↓	-2,600	↓
South Lanarkshire	4.1	6,600	0.8	↑	1,200	↑	-3.9	↓	-6,400	↓
Stirling	3.8	1,800	0.7	↑	300	↑	-3.3	↓	-1,300	↓
West Dunbartonshire	4.7	2,000	0.3	↑	100	↑	-6.4	↓	-3,100	↓
West Lothian	3.7	3,400	0.3	↑	200	↑	-4.2	↓	-3,800	↓
Scotland	4.2	113,300	0.6	↑	13,500	↑	-3.8	↓	-102,800	↓

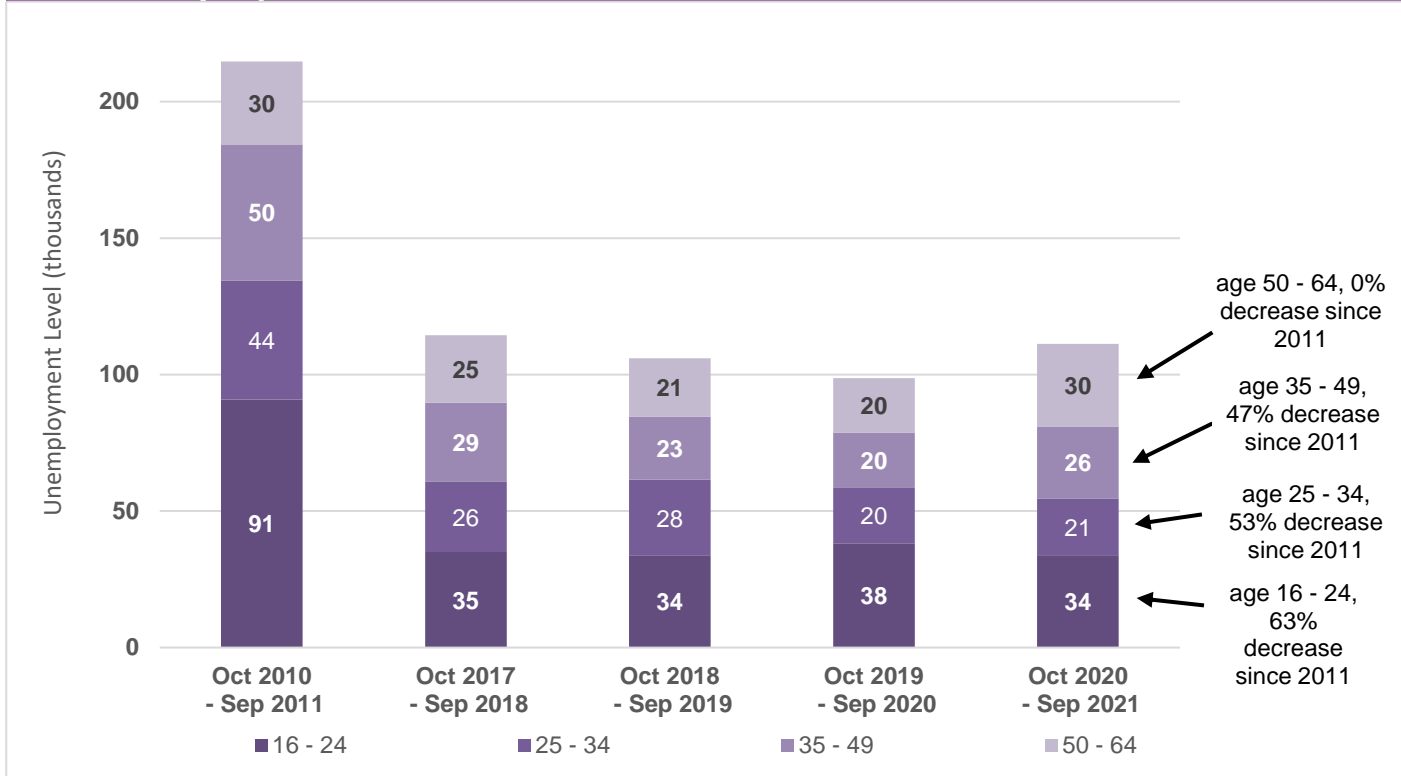
Sources: Annual Population Survey (ONS), Claimant Count (ONS)

Notes:

1. Levels rounded to the nearest hundred.
2. Rates are calculated on unrounded figures but changes over time are calculated on rounded levels and rates.
3. Totals may not equal the sum of individual parts due to rounding.

IMPORTANT NOTE: Model-based unemployment levels and rates for periods from April 2019-March 2020 onwards were reweighted in September 2021 based on Annual Population Survey (APS) responses that were reweighted in August 2021 to new populations derived using growth rates from HM Revenue and Customs (HMRC) Real Time Information (RTI) to allow for different trends during the COVID-19 pandemic. Annual comparisons within this table are therefore based on estimates which may differ from those previously published. For further information, see Notes (page 43).

Chart 4.1: ILO unemployment levels by age-group (16-64), Scotland
not seasonally adjusted

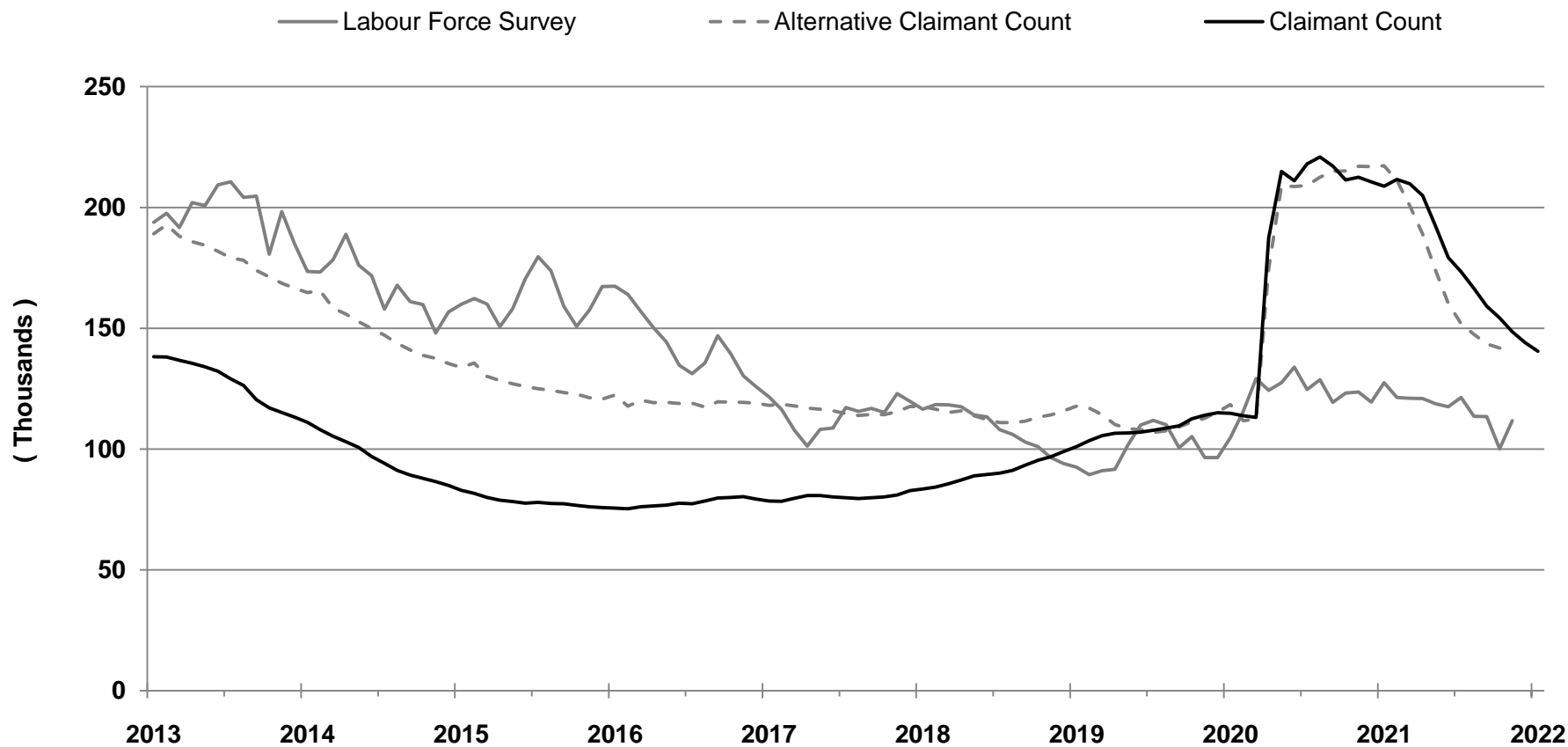


Source: Annual Population Survey, ONS (Oct-Sep datasets)

IMPORTANT NOTE: Annual Population Survey (APS) responses for periods from April 2020 - March 2021 onwards were reweighted in August 2021 to new populations derived using growth rates from HM Revenue and Customs (HMRC) Real Time Information (RTI) to allow for different trends during the COVID-19 pandemic. Therefore October 2019 - September 2020 estimates within this chart may differ from those previously published. For further information, see Notes (page 43).

Chart 5.1: Unemployment, Alternative Claimant Count and Claimant Count levels, Scotland, January 2013 - January 2022

seasonally adjusted



Sources: Labour Force Survey (ONS): Dec-Feb 2013 - Oct-Dec 2021

Claimant Count (ONS), Jan 2013 - Jan 2022

Alternative Claimant Count (DWP): Jan 2013 - Nov 2021

IMPORTANT NOTE: Labour Force Survey (LFS) estimates from Jan-Mar 2020 to Feb-Apr 2021 were reweighted in July 2021 to new populations derived using growth rates from HM Revenue and Customs (HMRC) Real Time Information (RTI) to allow for different trends during the COVID-19 pandemic. For further information, see Notes (page 43).

Table 5.1a: Claimant Count levels, January 2022 (Experimental data)

	Level	change on previous month		change on previous year		change on January 2013	
	(000s)	(000s)		(000s)		(000s)	
Scotland	141	-4	↓	-68	↓	2	↑
England	1,581	-27	↓	-640	↓	312	↑
Wales	78	0	↔	-31	↓	0	↔
Northern Ireland	41	-1	↓	-16	↓	-24	↓
UK	1,841	-32	↓	-755	↓	291	↑

Table 5.1b: Claimant Count rates, January 2022 (Experimental data)

	Rate	change on previous month		change on previous year		change on January 2013	
	(%)	(%pts)		(%pts)		(%pts)	
Scotland	4.4	-0.1	↓	-2.1	↓	-0.6	↓
England	4.6	-0.1	↓	-1.9	↓	0.3	↑
Wales	4.7	0.0	↔	-1.9	↓	-0.8	↓
Northern Ireland	4.2	-0.1	↓	-1.6	↓	-3.1	↓
UK	4.6	-0.1	↓	-1.9	↓	0.1	↑

Source: Claimant Count, ONS (seasonally adjusted)

Notes:

1. Levels rounded to nearest 1000.
2. The Claimant Count rate is calculated as a proportion of Claimant Count + Workforce jobs.
3. Claimant count rates are workplace based.
4. Data in these tables are seasonally adjusted. Therefore, they are not consistent with Table 5.2 onwards as these are based on data that is not seasonally adjusted.

ONS re-classified the Claimant Count series as experimental following the introduction of DWP Universal Credit and concerns that this series may be misleading.

See Notes (page 43) for further information.

Table 5.2: Claimant Count by local authority (Experimental data)
not seasonally adjusted

	January 2022 Total Claimants	% Change on year		Claimant Count rate (%)	Change on year (%pts)	
Aberdeen City	6,445	-31.9	↓	4.1	-1.9	↓
Aberdeenshire	4,180	-35.7	↓	2.6	-1.5	↓
Angus	2,385	-35.8	↓	3.5	-1.9	↓
Argyll and Bute	1,845	-33.5	↓	3.7	-1.8	↓
City of Edinburgh	10,660	-39.0	↓	2.9	-1.9	↓
Clackmannanshire	1,390	-31.5	↓	4.4	-2.0	↓
Dumfries and Galloway	3,210	-28.5	↓	3.7	-1.5	↓
Dundee City	4,890	-27.6	↓	4.9	-1.9	↓
East Ayrshire	4,095	-27.3	↓	5.4	-2.0	↓
East Dunbartonshire	1,605	-34.5	↓	2.5	-1.3	↓
East Lothian	2,130	-35.2	↓	3.2	-1.8	↓
East Renfrewshire	1,270	-39.4	↓	2.2	-1.5	↓
Falkirk	3,780	-35.1	↓	3.7	-2.0	↓
Fife	9,885	-30.4	↓	4.3	-1.9	↓
Glasgow City	25,810	-27.5	↓	5.7	-2.2	↓
Highland	4,295	-41.4	↓	3.0	-2.1	↓
Inverclyde	2,250	-23.1	↓	4.7	-1.4	↓
Midlothian	1,730	-40.7	↓	3.0	-2.1	↓
Moray	1,830	-35.5	↓	3.1	-1.7	↓
Na h-Eileanan Siar	475	-34.9	↓	3.1	-1.7	↓
North Ayrshire	4,510	-31.7	↓	5.6	-2.6	↓
North Lanarkshire	9,605	-31.7	↓	4.4	-2.0	↓
Orkney Islands	250	-30.4	↓	1.9	-0.8	↓
Perth and Kinross	2,565	-36.9	↓	2.8	-1.6	↓
Renfrewshire	4,375	-36.9	↓	3.8	-2.2	↓
Scottish Borders	2,400	-31.4	↓	3.6	-1.6	↓
Shetland Islands	280	-38.0	↓	2.0	-1.2	↓
South Ayrshire	3,155	-33.3	↓	4.8	-2.4	↓
South Lanarkshire	8,170	-33.0	↓	4.0	-2.0	↓
Stirling	1,650	-38.0	↓	2.7	-1.7	↓
West Dunbartonshire	3,175	-29.8	↓	5.7	-2.4	↓
West Lothian	3,795	-38.5	↓	3.2	-2.0	↓
Scotland	138,090	-32.7	↓	4.0	-1.9	↓

Source: Claimant Count, ONS

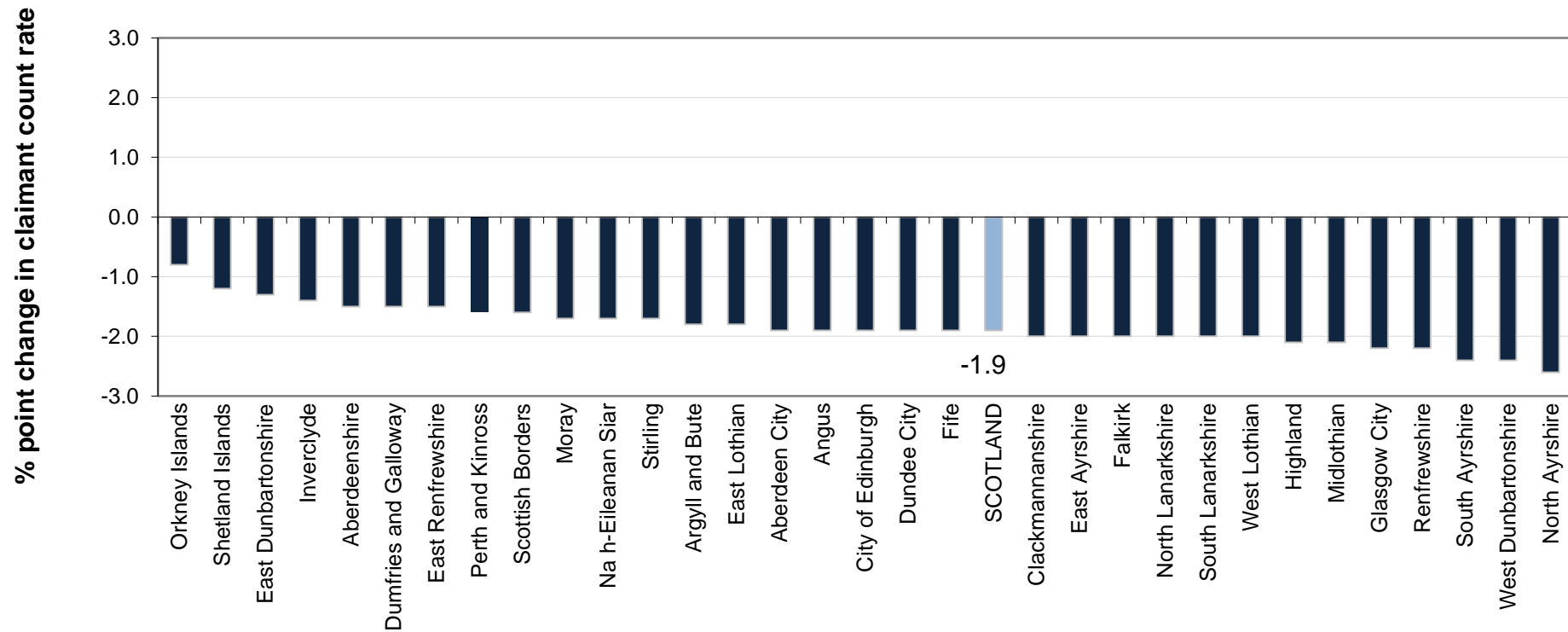
Notes:

1. Levels rounded to nearest 5.
2. The Claimant Count rate is calculated as a proportion of the resident population, aged 16-64, based on the Mid-year population estimates for 2020.

ONS re-classified the Claimant Count series as experimental following the introduction of DWP Universal Credit and concerns that this series may be misleading.

See Notes (page 43) for further information.

Chart 5.2: Change in Claimant Count rate by local authority, January 2021 to January 2022 (Experimental data)



Source: Claimant Count, ONS

Notes:

1. Claimant Count rates are based on unrounded data. Chart labels are rounded to one decimal place.
2. Claimant Count rates in each local authority and for Scotland are calculated as a proportion of the resident population, aged 16-64, based on the Mid-year population estimates for 2020.

Table 5.3: 16-24 Claimant Count levels and rates, Scotland and UK
(Experimental data)
not seasonally adjusted

	Scotland		UK	
	Level	Rate (%)	Level	Rate (%)
January 2021	38,965	6.9	493,825	7.0
January 2022	21,650	3.8	286,915	4.1
Change on year (rate as %pt)	-17,315	-3.1	-206,915	-2.9

Source: Claimant Count, ONS

Table 5.4: 16-24 Claimant Count levels and rates by gender, Scotland
(Experimental data)
not seasonally adjusted

	Male		Female	
	Level	Rate (%)	Level	Rate (%)
January 2021	24,395	8.5	14,570	5.2
January 2022	13,735	4.8	7,915	2.8
Change on year (rate as %pt)	-10,660	-3.7	-6,650	-2.4

Source: Claimant Count, ONS

Notes:

1. Levels rounded to nearest 5.
2. These Claimant Count rates for 16-24 year olds have been produced by the Scottish Government and are calculated as a proportion of the resident population, aged 16-24, based on the Mid-year population estimates for 2020.

ONS re-classified the Claimant Count series as experimental following the introduction of DWP Universal Credit and concerns that this series may be misleading.

See Notes (page 43) for further information.

Table 5.5: 16-24 Claimant Count levels and rates by Local Authority, January 2022 (Experimental data)

	Level			Rate		
	January 2022	change on year		January 2022	change on year (%pts)	
Scotland	21,650	-17,315	↓	3.8	-3.1	↓
<i>Local Authority Area</i>						
Aberdeen City	985	-695	↓	3.7	-2.6	↓
Aberdeenshire	725	-545	↓	3.2	-2.4	↓
Angus	455	-320	↓	4.3	-3.0	↓
Argyll and Bute	290	-175	↓	3.6	-2.2	↓
City of Edinburgh	1,360	-1,425	↓	2.1	-2.2	↓
Clackmannanshire	245	-215	↓	4.9	-4.3	↓
Dumfries and Galloway	475	-365	↓	3.7	-2.9	↓
Dundee City	870	-565	↓	4.2	-2.7	↓
East Ayrshire	690	-485	↓	6.0	-4.2	↓
East Dunbartonshire	225	-230	↓	2.2	-2.3	↓
East Lothian	330	-320	↓	3.5	-3.3	↓
East Renfrewshire	195	-240	↓	2.0	-2.5	↓
Falkirk	650	-580	↓	4.2	-3.8	↓
Fife	1,740	-1,140	↓	4.4	-2.9	↓
Glasgow City	3,630	-2,410	↓	4.6	-3.1	↓
Highland	645	-740	↓	3.1	-3.5	↓
Inverclyde	385	-135	↓	5.2	-1.8	↓
Midlothian	330	-315	↓	3.9	-3.7	↓
Moray	310	-260	↓	3.4	-2.9	↓
Na h-Eileanan Siar	55	-65	↓	2.6	-3.1	↓
North Ayrshire	765	-560	↓	5.8	-4.3	↓
North Lanarkshire	1,585	-1,165	↓	4.4	-3.3	↓
Orkney Islands	55	-25	↓	3.1	-1.4	↓
Perth and Kinross	365	-470	↓	2.7	-3.4	↓
Renfrewshire	670	-650	↓	3.8	-3.6	↓
Scottish Borders	410	-365	↓	4.1	-3.7	↓
Shetland Islands	55	-50	↓	2.7	-2.4	↓
South Ayrshire	505	-445	↓	5.0	-4.4	↓
South Lanarkshire	1,175	-1,085	↓	3.9	-3.6	↓
Stirling	250	-310	↓	2.1	-2.6	↓
West Dunbartonshire	530	-340	↓	6.2	-4.0	↓
West Lothian	700	-620	↓	3.9	-3.4	↓

Source: Claimant Count, ONS

Notes:

1. Levels rounded to nearest 5.

2. These Claimant Count rates for 16-24 year olds have been produced by the Scottish Government and are calculated as a proportion of the resident population, aged 16-24, based on the Mid-year population estimates for 2020.

ONS re-classified the Claimant Count series as experimental following the introduction of DWP Universal Credit and concerns that this series may be misleading.

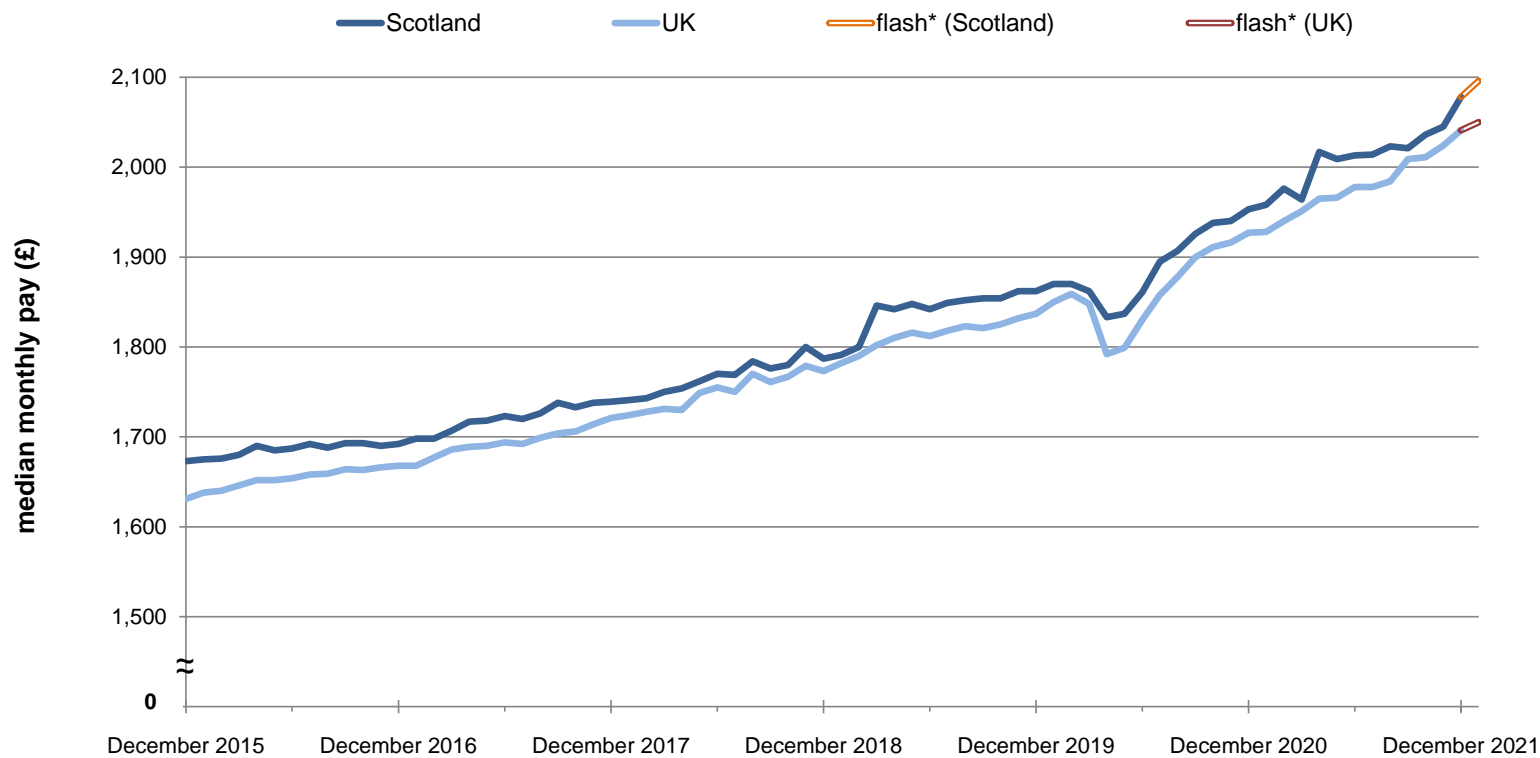
See Notes (page 43) for further information.

Table 6.1: HMRC RTI data, Scotland and UK, December 2015 - December 2021 (Experimental data)

Scotland	December 2015	December 2016	December 2017	December 2018	December 2019	December 2020	December 2021
Total payrolled employees (000s)	2,341	2,354	2,370	2,379	2,386	2,307	2,403
<i>Annual Growth (%)</i>		0.5	0.7	0.4	0.3	-3.3	4.2
Aggregate pay per month (£million)	4,999	5,070	5,198	5,369	5,584	5,608	6,146
<i>Annual Growth (%)</i>		1.4	2.5	3.3	4.0	0.4	9.6
Median monthly pay (£ per month)	1,673	1,692	1,739	1,787	1,862	1,953	2,078
<i>Annual Growth (%)</i>		1.1	2.8	2.8	4.2	4.9	6.4
Mean monthly pay (£ per month)	2,135	2,154	2,193	2,257	2,340	2,431	2,558
<i>Annual Growth (%)</i>		0.9	1.8	2.9	3.7	3.9	5.2
UK	December 2015	December 2016	December 2017	December 2018	December 2019	December 2020	December 2021
Total payrolled employees (000s)	27,689	28,087	28,470	28,766	29,002	28,126	29,382
<i>Annual Growth (%)</i>		1.4	1.4	1.0	0.8	-3.0	4.5
Aggregate pay per month (£million)	62,012	64,420	67,222	69,974	72,854	74,725	82,411
<i>Annual Growth (%)</i>		3.9	4.4	4.1	4.1	2.6	10.3
Median monthly pay (£ per month)	1,631	1,668	1,721	1,773	1,837	1,927	2,041
<i>Annual Growth (%)</i>		2.3	3.2	3.0	3.6	4.9	5.9
Mean monthly pay (£ per month)	2,240	2,294	2,361	2,433	2,512	2,657	2,805
<i>Annual Growth (%)</i>		2.4	2.9	3.0	3.2	5.8	5.6

Source: PAYE real-time information, Seasonally adjusted (HMRC)

Chart 6.1: Median monthly pay, Scotland and UK, December 2015 - January 2022 (Experimental data)
seasonally adjusted



Source: PAYE real-time information (HMRC)

*flash estimates for January 2022 are based on around 85% of information being available and may be subject to revisions.

Charts 6.2 and 6.3: Payrolled employees and median monthly pay by region - annual change, January 2021 to January 2022 (Experimental data)
seasonally adjusted

Chart 6.2: Total payrolled employees by Government Office Region
 - % change on year
seasonally adjusted

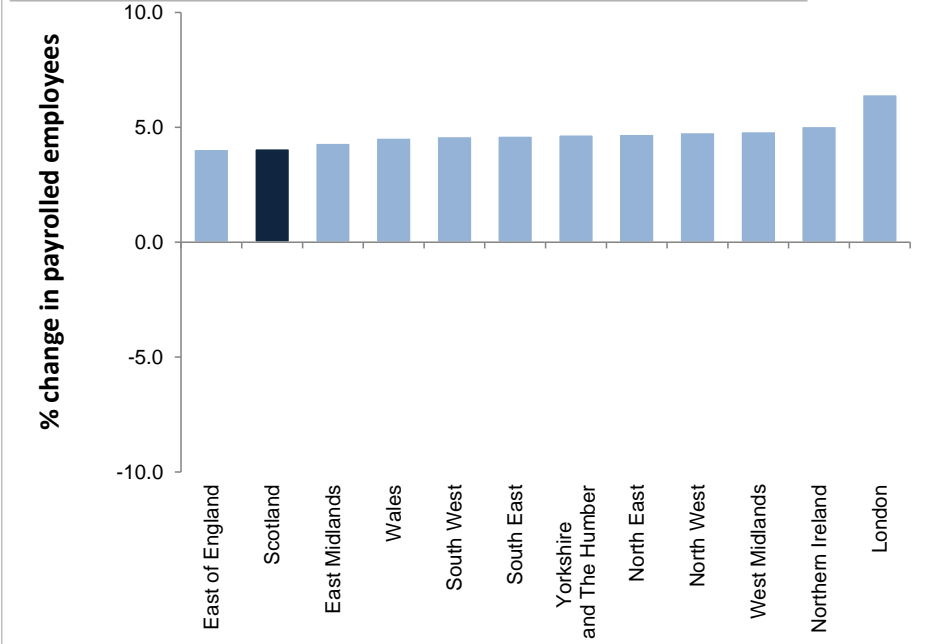
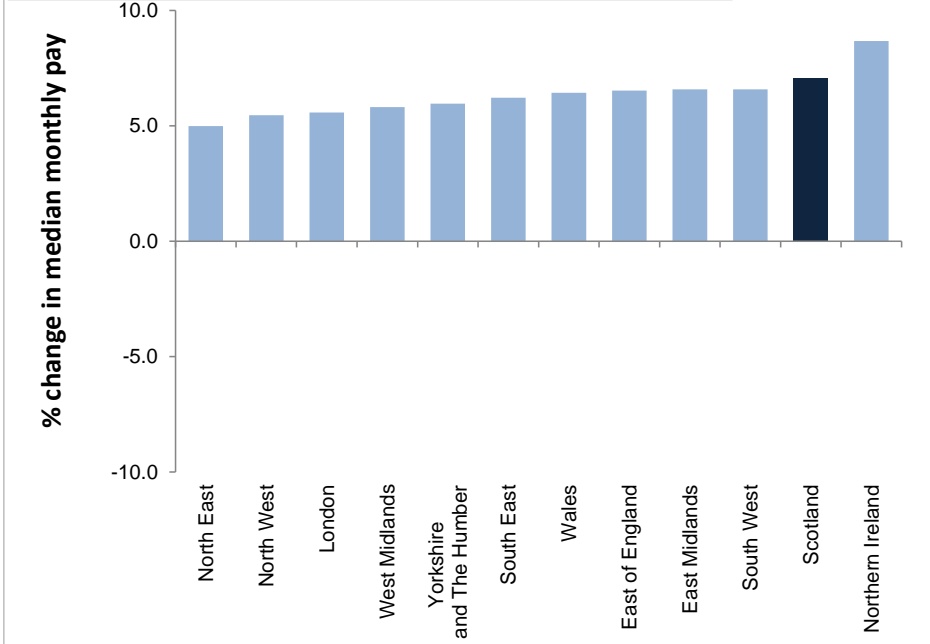


Chart 6.3: Median monthly pay by Government Office Region
 - % change on year
seasonally adjusted



Source: PAYE real-time information (HMRC)

Early (flash) estimates for January 2022 are based on around 85% of information and are more likely to be subject to more significant revisions.

Charts 6.4 and 6.5: Payrolled employees and median monthly pay (NUTS2) - annual change, January 2021 to January 2022 (Experimental data)

seasonally adjusted

Chart 6.4: Total payrolled employees by NUTS2 region - % change on year
seasonally adjusted

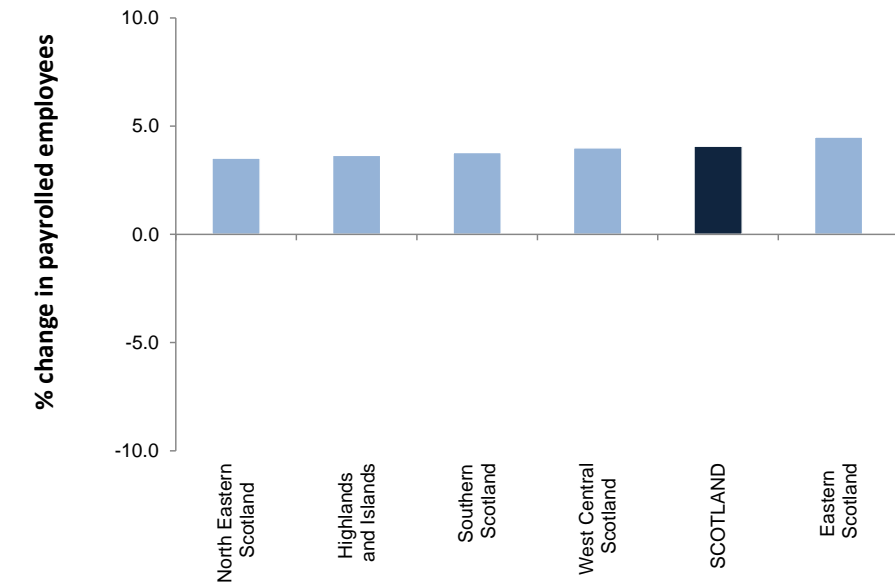
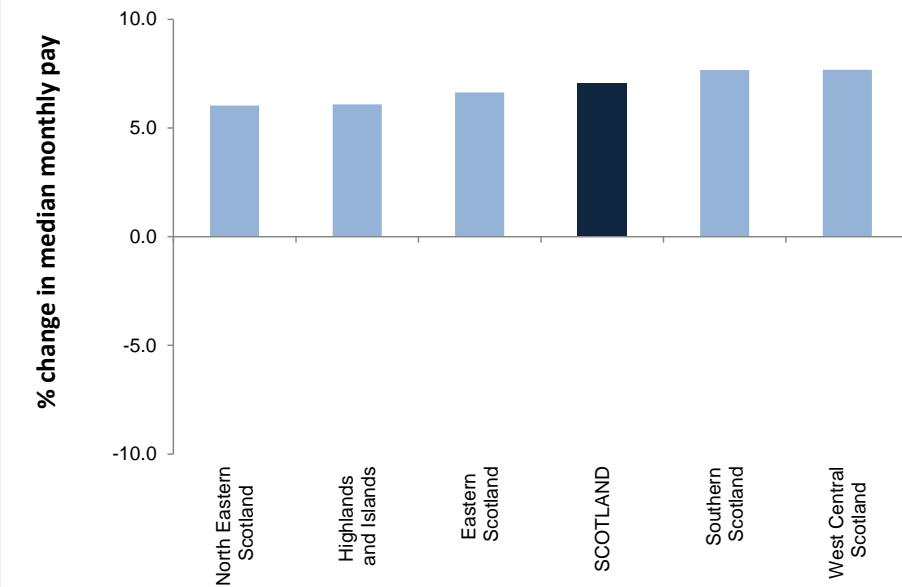


Chart 6.5: Median monthly pay by NUTS2 region - % change on year
seasonally adjusted



Source: PAYE real-time information (HMRC)

Early (flash) estimates for January 2022 are based on around 85% of information and are more likely to be subject to more significant revisions.

Table 6.2: HMRC RTI data (NUTS2 and NUTS3 areas), January 2022 (Experimental data)

	Payrolled employees			Median monthly pay		
	Level (000s)	% change on year		£ per month	% change on year	
Scotland	2,403	4.1	↑	2,096	7.0	↑
North Eastern Scotland	224	3.5	↑	2,197	6.0	↑
Aberdeen City and Aberdeenshire	224	3.5	↑	2,205	6.0	↑
Highlands and Islands	204	3.7	↑	1,969	6.1	↑
Caithness and Sutherland and Ross and Cromarty	39	3.0	↑	1,988	6.2	↑
Inverness and Nairn and Moray, Badenoch and Strathspey	91	3.9	↑	2,017	8.0	↑
Lochaber, Skye and Lochalsh, Arran and Cumbrae and Argyll and Bute	41	3.8	↑	1,779	1.3	↑
Na h-Eileanan Siar	12	3.8	↑	2,119	9.4	↑
Orkney Islands	10	2.6	↑	1,876	3.9	↑
Shetland Islands	11	4.2	↑	2,242	3.9	↑
Eastern Scotland	892	4.5	↑	2,104	6.6	↑
Angus and Dundee City	112	4.3	↑	1,939	4.0	↑
City of Edinburgh	240	5.7	↑	2,213	5.1	↑
Clackmannanshire and Fife	180	3.5	↑	2,058	7.8	↑
East Lothian and Midlothian	93	4.6	↑	2,105	6.9	↑
Falkirk	74	3.4	↑	2,154	8.1	↑
Perth and Kinross and Stirling	105	4.6	↑	2,080	7.9	↑
West Lothian	88	4.5	↑	2,171	6.8	↑
West Central Scotland	679	4.0	↑	2,117	7.7	↑
East Dunbartonshire, West Dunbartonshire and Helensburgh and Lomond	98	2.8	↑	2,216	7.1	↑
Glasgow City	265	5.1	↑	2,026	7.5	↑
Inverclyde, East Renfrewshire and Renfrewshire	158	3.7	↑	2,177	7.7	↑
North Lanarkshire	157	3.2	↑	2,135	7.1	↑
Southern Scotland	405	3.8	↑	2,050	7.7	↑
Dumfries and Galloway	59	3.5	↑	1,874	4.9	↑
East Ayrshire and North Ayrshire mainland	105	3.8	↑	2,035	7.1	↑
Scottish Borders	48	3.8	↑	1,946	9.0	↑
South Ayrshire	45	4.3	↑	2,033	8.1	↑
South Lanarkshire	150	3.7	↑	2,192	9.2	↑

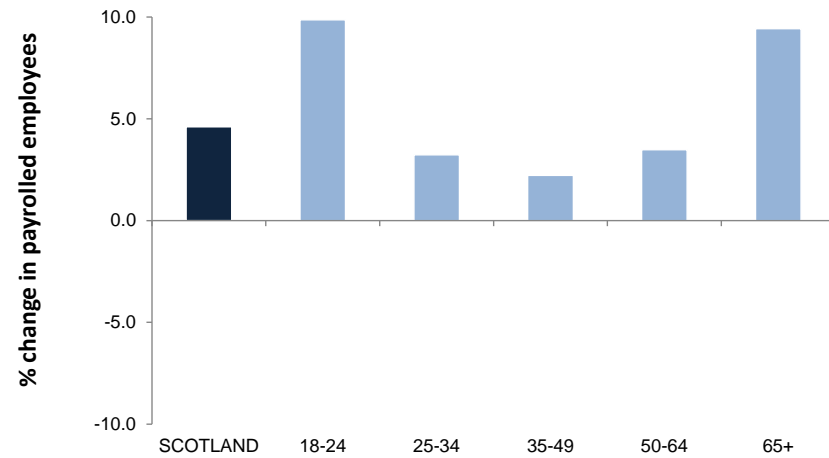
Source: PAYE real-time information, Seasonally adjusted (HMRC)

Early (flash) estimates for January 2022 are based on around 85% of information and are more likely to be subject to more significant revisions.

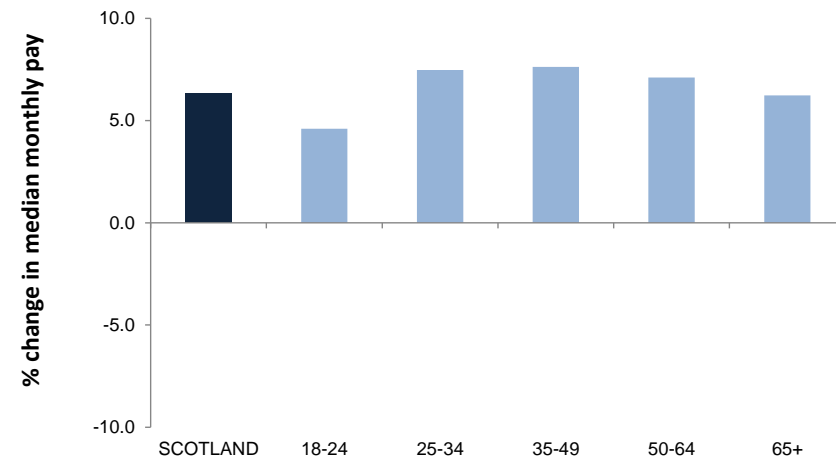
Charts 6.6 and 6.7: Payrolled employees and median monthly pay by age - annual change, December 2020 to December 2021 (Experimental data)

seasonally adjusted

**Chart 6.6: Total payrolled employees by age
- % change on year
*seasonally adjusted***



**Chart 6.7: Median monthly pay by age
- % change on year
*seasonally adjusted***



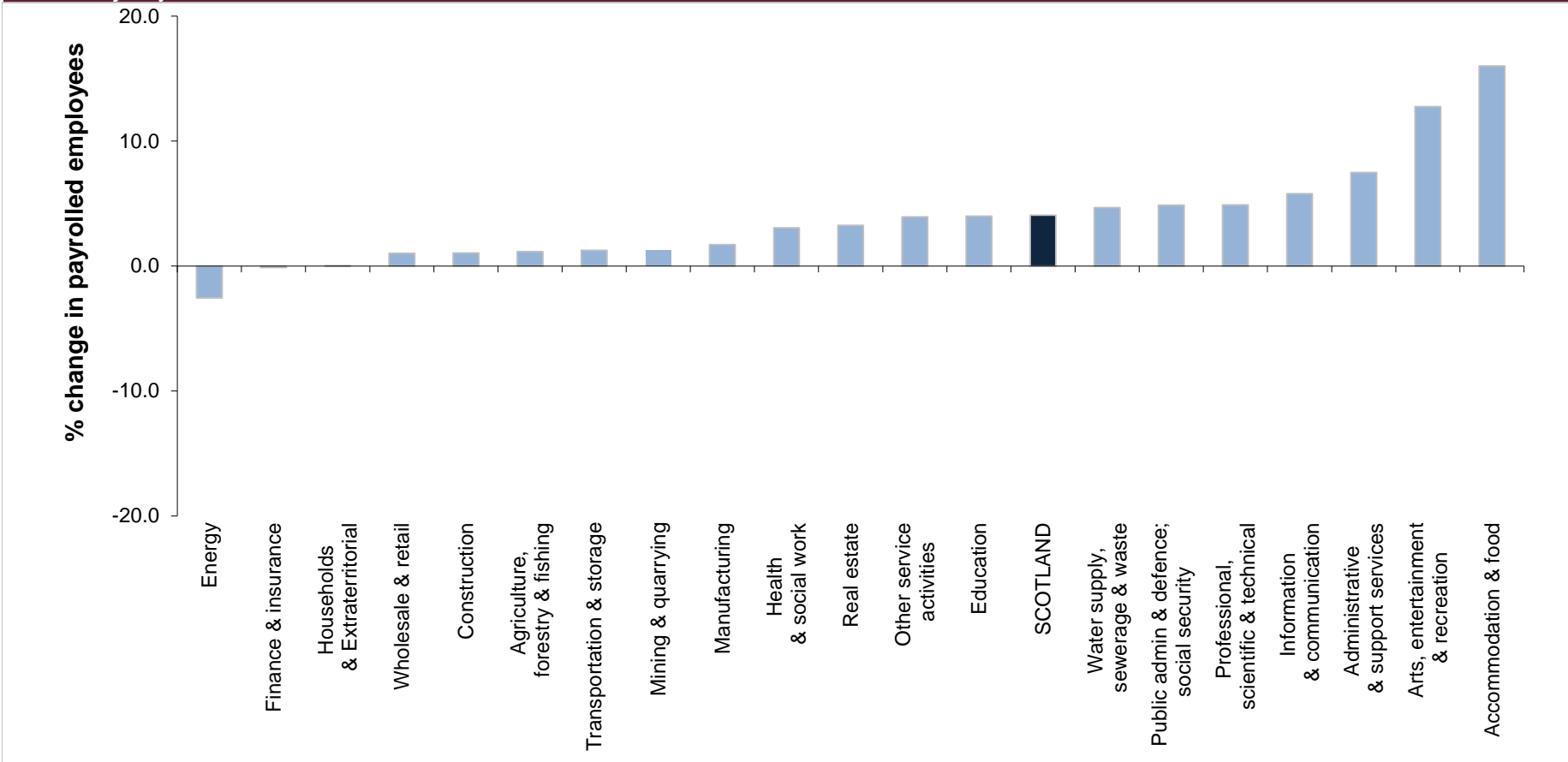
Source: PAYE real-time information (HMRC)

Notes:

Based on early December 2021 estimates published in January 2022. December 2021 estimates are based on around 85% of information available at the time of publication and may be subject to more significant revisions. Annual changes in payrolled employees and median monthly pay by age are updated quarterly. The next estimates, comparing early estimates for March 2022 with March 2021, will be published in April 2022.

Chart 6.8: Payrolled employees by industry - annual change, January 2021 to January 2022 (Experimental data)

seasonally adjusted



Source: PAYE real-time information (HMRC)

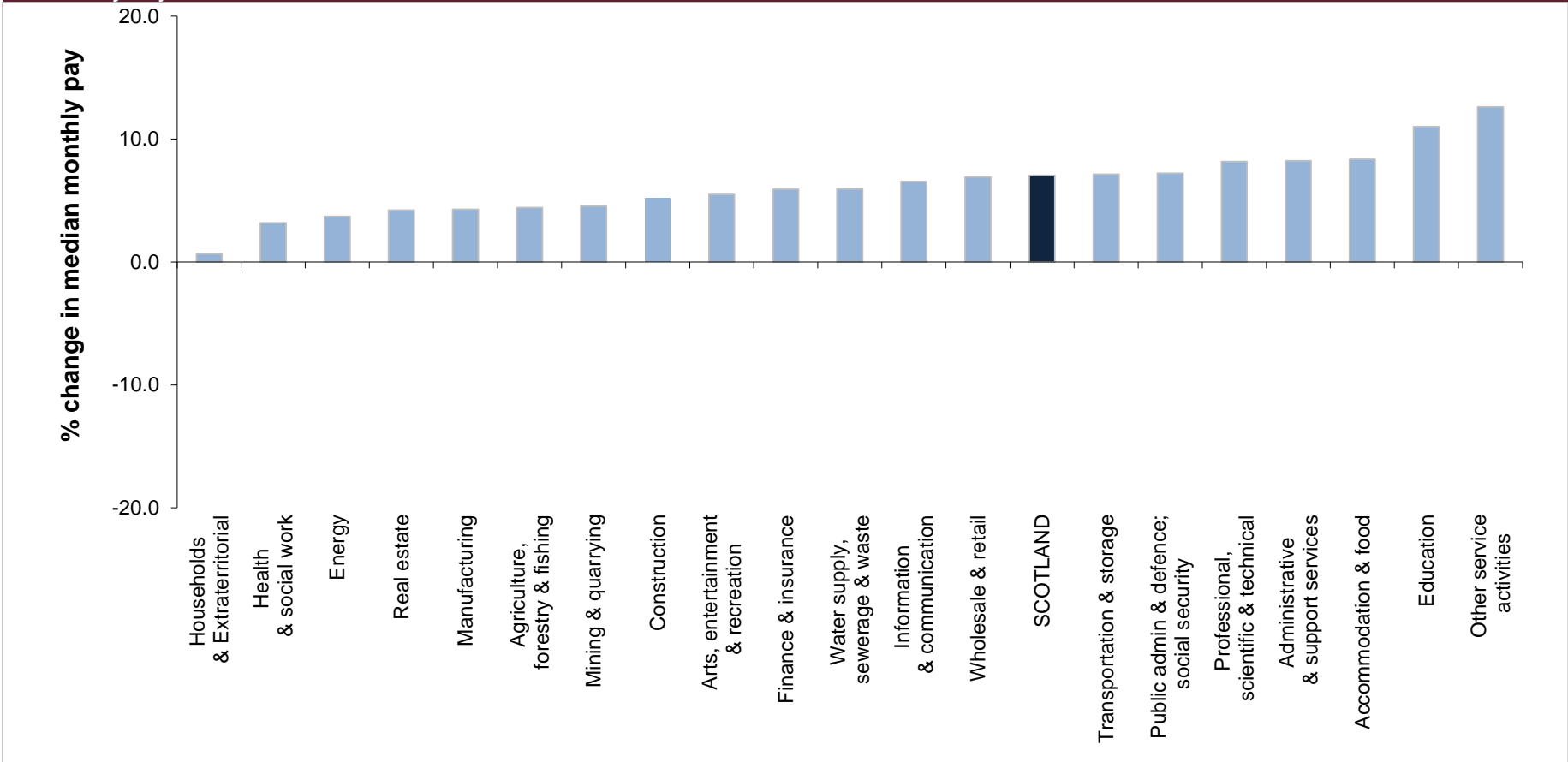
Notes:

Based on early January 2022 estimates published in February 2022. January 2022 estimates are based on around 85% of information available at the time of publication and may be subject to more significant revisions.

Annual change in payrolled employees by industry sector is updated quarterly. The next estimates, comparing early estimates for April 2022 with April 2021, will be published in May 2022.

Chart 6.9: Median monthly pay by industry - annual change, January 2021 to January 2022 (Experimental data)

seasonally adjusted



Source: PAYE real-time information (HMRC)

Notes:

Based on early January 2022 estimates published in February 2022. January 2022 estimates are based on around 85% of information available at the time of publication and may be subject to more significant revisions.

Annual change in payrolled employees by industry sector is updated quarterly. The next estimates, comparing early estimates for April 2022 with April 2021, will be published in May 2022.

Notes on the LFS/APS estimates [Sections 1 - 4]

IMPORTANT NOTE: Labour Force Survey (LFS) estimates from Jan-Mar 2020 to Feb-Apr 2021 were reweighted in July 2021 to new populations derived using growth rates from HM Revenue and Customs (HMRC) Real Time Information (RTI) to allow for different trends during the COVID-19 pandemic. Annual Population Survey responses for periods from April 2019 - March 2020 onwards were also reweighted by the same method in August 2021. The reweighting will give improved estimates of both rates and levels estimated from these surveys.

Further information on the reweighting process and its impact on labour market statistics can be found in an ONS article at:

<https://www.ons.gov.uk/employmentandlabourmarket/peopleinwork/employmentandemployeetypes/articles/impactofreweightingonlabourforcesurveykeyindicatorsuk/2020>

Subsequent to this reweighting, a small error was discovered in how it had been implemented. When calculating three-month averages for the PAYE real-time information (RTI) the months used were the previous three month average e.g. for the October to December LFS period, the RTI data used was for September to November. The impact on LFS economic activity estimates at national level is mostly below 0.1 per cent and the impact on rates is less than 0.02 percentage points. Estimates for Northern Ireland have not had the non-response bias adjustment from the recent reweighting fully applied. Early indications suggest the impact on UK headline rate estimates would be less than 0.1 percentage point. ONS will continue to investigate this and will keep users advised accordingly.

ONS are planning to reweight Labour Force Survey information for periods Jan-Mar 2020 onwards and Annual Population Survey data for Apr 2019 - Mar 2020 onwards later this year. ONS will provide further details of this reweighting exercise including a timeline as part of their Labour Market publication in March 2022.

Measures of disability [Tables 3.1a and 3.1b]

In the April-June 2013 dataset, and subsequent datasets, questions used to derive current disability status of a person were changed. Estimates are now based on the core definition of disability under the Equality Act 2010, as specified in the Government Statistical Service (GSS) Harmonised Standards for Questions on disability.

- The definition includes people with a health condition or illness lasting 12 months or more that reduces their ability to carry out day-to-day activities.
- The definition excludes certain non-core groups covered by the Equality Act, such as those with progressive or past conditions that do not currently limit their activities, and conditions that only limit their activities without medication or treatment.
- Respondents are now asked to take into account any medication that they are currently taking when previously they were asked to consider their day-to-day activities without the use of medication.

The introduction of this new definition has created a discontinuity in the series and estimates are not directly comparable with earlier periods

Claimant Count [Section 5]

The Claimant Count is not a measure of unemployment and changes in the Claimant Count will not be wholly because of changes in the number of people who are unemployed. It is a measure of the number of people claiming benefit principally for the reason of being unemployed:

- between January 1971 (when comparable estimates start) and September 1996, it is an estimate of the number of people who would have claimed unemployment-related benefits if Jobseeker's Allowance had existed at that time.
- between October 1996 and April 2013, the Claimant Count is a count of the number of people claiming Jobseeker's Allowance (JSA).
- between May 2013 and October 2013, the Claimant Count includes all claimants of Universal Credit (including those who were in work) as well as all JSA claimants
- from November 2013, the Claimant Count includes all out of work Universal Credit claimants as well as all JSA claimants .
- From April 2015 onwards the claimant count includes those claimants of Universal Credit who are required to search for work, i.e. within the Searching for Work conditionality regime as defined by the Department for Work & Pensions as well as all JSA claimants

Information for January 2022 is for the number of claimants as at 13 January 2022.

In addition to the Claimant Count, the Department for Work and Pensions (DWP) publishes quarterly Alternative Claimant Count statistics. These measure the number of people claiming unemployment-related benefits by modelling what the Claimant Count would have looked like if Universal Credit had been in place since 2013. Further information on the Alternative Claimant Count can be found at:

<https://www.gov.uk/government/collections/alternative-claimant-count-statistics>

Further information

Further Labour Market information can be obtained from the following sites/sources.

Scottish Government Labour Market Statistics:

Further commentary and charts are published in *Labour Market Trends: February 2022*

<https://www.gov.scot/publications/labour-market-trends-february-2022/>

Scottish Government Open Data:

<https://statistics.gov.scot/home>

ONS:

Labour Market Statistics Theme page

<http://www.ons.gov.uk/ons/taxonomy/index.html?nscl=Labour+Market>

Regional Labour Market Statistics

<https://www.ons.gov.uk/employmentandlabourmarket/peopleinwork/employmentandemployeetypes/bulletins/regionallabourmarket/previousReleases>

HMRC:

Earnings and employment statistics from Pay As You Earn (PAYE) Real Time Information

[https://www.ons.gov.uk/employmentandlabourmarket/peopleinwork/earningsandworkinghours/bulletins/earningsandemploymentfrompayasyouearnrealtimeinformati
onuk/previousReleases](https://www.ons.gov.uk/employmentandlabourmarket/peopleinwork/earningsandworkinghours/bulletins/earningsandemploymentfrompayasyouearnrealtimeinformati
onuk/previousReleases)

NOMIS:

Online database for official labour market statistics

<https://www.nomisweb.co.uk/default.asp>

Contact details

Telephone: 0131 244 6773

email: LMStats@gov.scot